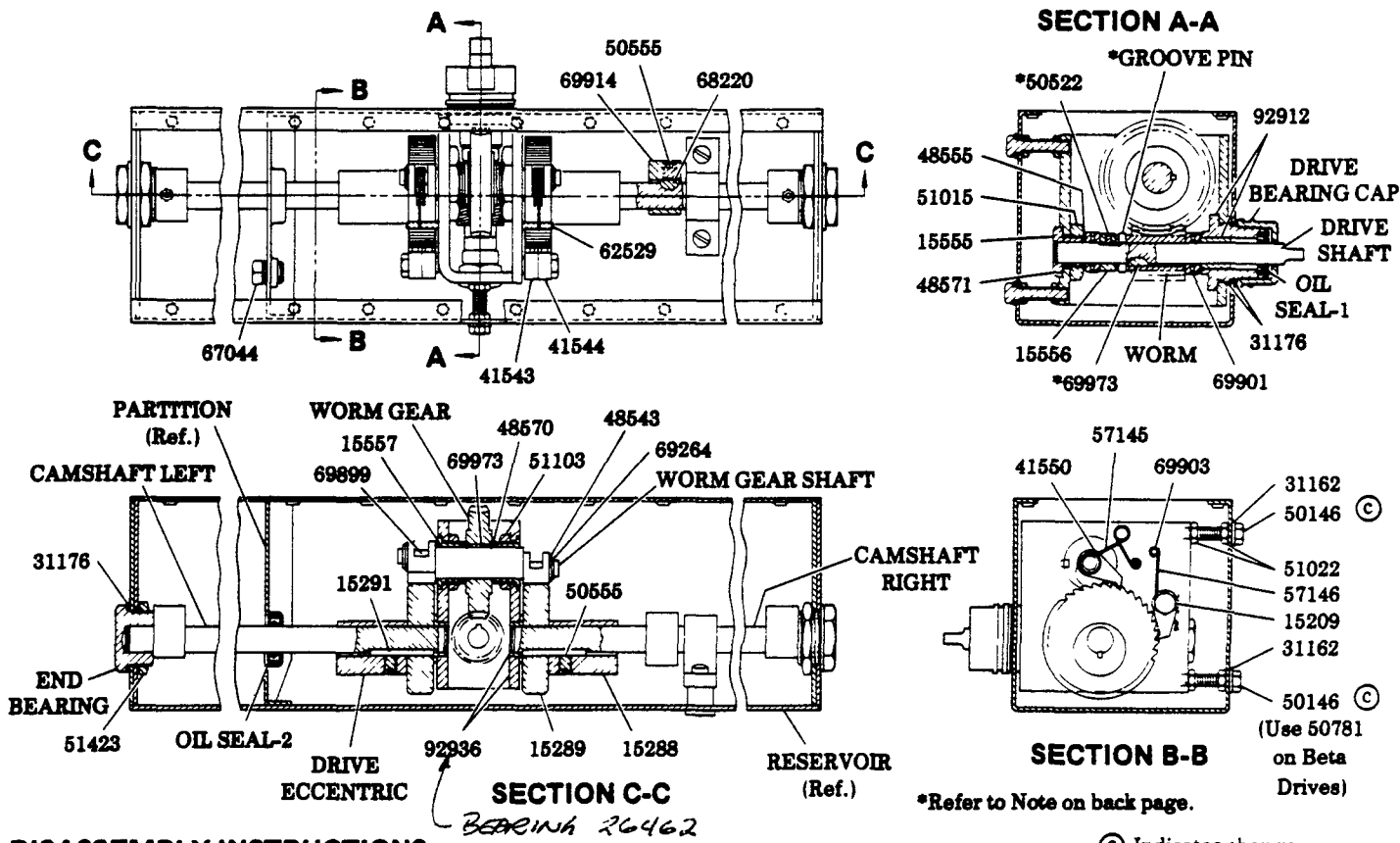


ROTARY DRIVE ADAPTATION

CENTER INTERNAL REAR ROTARY DRIVE



*Refer to Note on back page.
© Indicates change

DISASSEMBLY INSTRUCTIONS

– Standard Rear Rotary Drive (Drive Shaft not extending through front of Reservoir) –

- 1) Removal of pumps, filler assemblies and cover plate allows access to the lubricator drive.
- 2) Loosen set screws holding cam lobes and drive eccentrics to camshafts. Move cams clear of their woodruff keys and remove keys. Unscrew 51423 Nuts from end bearings and remove end bearings and 31176 Washers. Withdraw camshafts from reservoir while removing 15289 Ratchets, 15291 Square Keys and drive eccentrics, or 66642 Woodruff Keys and 69548 Retaining Rings, cam lobes and nuts.
- 3) Oil seal and plug can be removed from partition if necessary.
- 4) Unscrew Drive Bearing Cap and remove cap with 31176 Washer. Back off 51022 Nuts and remove 50146 Screws, 31162 Washers and nuts. Lift gear box out of reservoir and remove 31176 Washer from back of gear box.
- 5) Remove 69264 Retaining Rings and 48543 Washers from each end of worm gear shaft to allow removal of the 41550 Pawls, 69899 Bearing Liner and 57145 Pawl Springs. Unscrew one 51103 Nut and remove 15557 Bearing. Withdraw worm gear shaft from gear box and remove loose parts. Unscrew remaining 51103 Nut and remove 15557 Bearing. Unscrew 15209 Pawl Pins and remove 41543 and 41544 Pawls and 57146 Pawl Springs from gear box.
- 6) Unscrew 15555 End Bearing and loosen 50522 Set Screw. Pull Drive Shaft through 92912 Drive Bearing Assembly to allow removal of 51015 Crank Shaft Nut, 69901 Thrust Bearing and 15556 Spacer. Move Worm clear of its woodruff key and remove key. Withdraw drive shaft from gear box leaving worm, second 69901 Thrust Bearing and 92912 Drive Bearing Assembly loose.
- 7) To assemble, reverse disassembly instructions.

– Beta-type Rotary Drive (Drive Shaft extending through front of Reservoir) –

Follow steps 1, 2, 3 & 5, then two steps below.

Punch groove pin through Worm and Drive Shaft. Withdraw drive shaft through back of reservoir leaving both 69901 Thrust Bearings, 15556 Spacer, worm and 92912 Drive Bearing Assembly loose to be removed from reservoir.

Back off 51022 Nuts and remove 50146 and 50781 Screws, 31162 Washers and nuts. Remove 92936 Gear Box Assembly from reservoir. Unscrew 51015 Crank Shaft Nut and remove 15555 End Bearing and nut from gear box assembly.

LINCOLN ST. LOUIS
4010 GOODFELLOW BLVD. • ST. LOUIS, MO. 63120 • (314) 383-5900

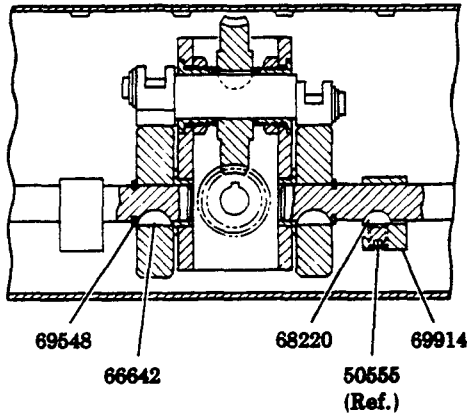
A DIVISION OF
McNEIL
CORPORATION

SECTION - **M3**
PAGE - **4A**

Lubricator	Drive	Size	Camshaft Right	Camshaft Left	Drive Shaft	Oil Seal-1	Oil Seal-2	†End Bearing	Drive Bearing Cap	Groove Pin
800010	880046-4	2 Gal.	15699	15657	16155	70041	70001	40701	15655	69931
800022	880046-4	2 Gal.	15699	15657	15559	70041	70001	40701	15655	NA
800023	880046-11	3 Gal.	16428	16428	15559	70041	70001	40701	15655	NA
800038	880046-11	1.5 Gal.	16356	16356	15559	70041	70001	40701	15655	NA
800062	880046-6	2 Qt.	15537	15538	15577	70177	NA	40701	15655	69931
800063	880046-13	1.5 Gal.	16356	16356	15577	70177	NA	40701	15655	69931
800081	880046-12	1.5 Gal.	16356	16356	15650	70077	NA	40701	15646	NA
800287	880046-11	3 Gal.	16428	16428	16155	70041	70001	40701	15655	69931
800336	880046-4	1 Gal.	16246	16246	15741	70041	NA	40701	15655	NA
800563	880046-4	2 Gal.	15699	15657	15559	70041	NA	40701	15655	NA
800601	880046-11	1.5 Gal.	16356	16356	16155	70041	70001	40701	15655	69931
800927	880046-2	2 Qt.	15537	15538	15770	70177	NA	40701	15655	NA
800986	880046-12	3 Gal.	16463	16486	15559	70041	70001	40701	15655	NA
800988	880046-12	3 Gal.	16491	16491	15559	70041	70001	880325	15655	NA

NOTE: On standard rear rotary drive, drive shaft is secured by 69973 #5 Woodruff Key and 50522 Set Screw. On Beta-type rotary drive, drive shaft is secured by groove pin only (see chart).

† 2 End Bearings required.



Drive	Ratio	Worm	Worm Gear	Worm Gear Shaft	Drive Eccentric
880046-2	137.5:1	15274	15273	15585	15288
880046-3	250:1	15253	15586	15585	15288
880046-4	375:1	15253	15586	15584	15288
880046-5	375:1	15253	15586	15584	15743
880046-6	250:1	15253	15586	15585	15288
880046-7	375:1	15253	15586	15584	15743
880046-10	206:1	15274	15273	15584	15288
880046-11	375:1	15253	15586	15584	**
880046-12	137.5:1	15274	15273	15585	**
880046-13	250:1	15253	15586	15585	**

**Drive Eccentrics and 15291 Square Keys are replaced by 66642 Woodruff Keys, 69548 Retaining Rings, 69914 Cam Lobes and 68220 Woodruff Keys. (Refer to illustration.)

SERVICE PARTS

PART	QUAN.	DESCRIPTION	PART	QUAN.	DESCRIPTION	PART	QUAN.	DESCRIPTION
15209	2	Pawl pin	48570	2	Thrust washer	62529	2	Spring pin bearing
15288	1	Drive eccentric	48571	As req'd.	Shim	66642	As req'd.	#61 Woodruff key
15289	2	Ratchet	50146	As req'd.	Screw	67044	1	Pipe plug
15291	2	Square key	50522	As req'd.	Set screw	68220	***	#3 Woodruff key
15555	1	End bearing	50555	2	Set screw	69264	2	Retaining ring
15556	1	Spacer	50555	***	Set screw	69548	As req'd.	Retaining ring
15557	2	Bearing	50781	As req'd.	Socket head screw	69699	2	Bearing liner
31162	2	Washer	51015	1	Crank shaft nut	69901	2	Thrust bearing
31176	4	Washer	51022	4	Nut	69903	4	Pawl spring pin
41543	2	Pawl	51103	2	Nut	69914	***	Cam lobe
41544	2	Pawl	51423	2	Nut	69973	As req'd.	#5 Woodruff key
41550	2	Pawl	57146	4	Pawl spring	92912	1	Drive bearing
48543	2	Washer	57146	4	Pawl spring	92936	1	Gear box assembly
48555	As req'd.	Shim						

***One per Pump Station

RETAIN THIS INFORMATION FOR FUTURE REFERENCE

When ordering replacement parts, list: Part Number, Description, Model Number, and Series Letter.

LINCOLN ST. LOUIS provides a Distributor Network that stocks equipment and replacement parts. A list of Authorized Service Departments will be furnished upon request.