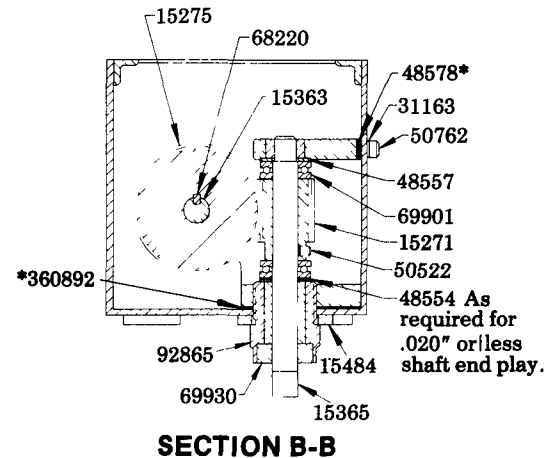
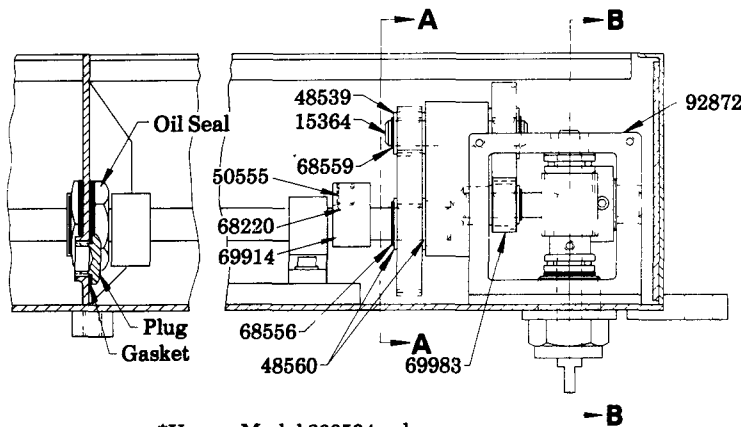
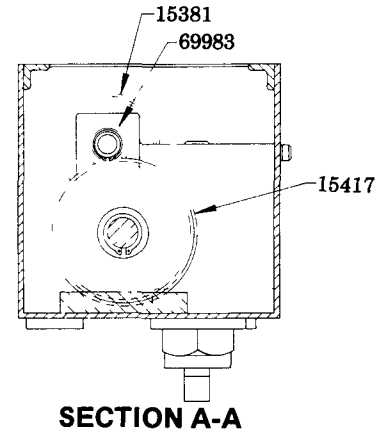
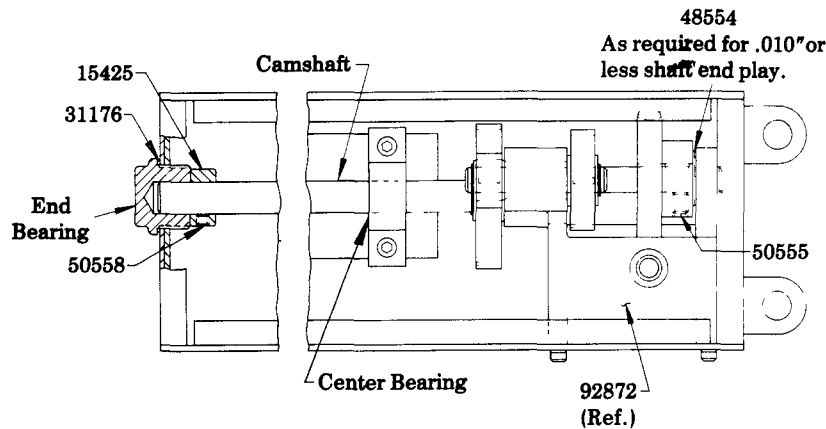


ROTARY DRIVE ADAPTATION

**BOTTOM VERTICAL GEAR DRIVE
350:1 RATIO**



*Use on Model 800504 only.

DISASSEMBLY INSTRUCTIONS

Removal of all pumps, filler assembly and cover plate allows access to the Lubricator Drive Assembly.

Unscrew end bearing from end of reservoir. Loosen set screws holding 69914 Cam Lobes and 15425 Stop Collar to camshaft. Slide each cam clear of its woodruff key and remove keys. Rotate camshaft until 68220 Woodruff Key of cam lobe at drive end of shaft aligns with keyway in center bearing. Pull camshaft through end bearing opening in reservoir until shaft is clear of drive bracket. Unscrew 92865 Stuffing Box Assembly and withdraw 15365 Drive Shaft with 69901 Thrust Bearings and 15271 Worm. Note number and location of shims on drive shaft. Unscrew the 50762 Socket Head Screws holding 92872 Drive Bracket Assembly to reservoir and remove assembly. Slide 48560 Washer and 15417 Spur Gear from camshaft, remove woodruff key and slide second 48560 Washer from shaft, then remove 68556 Retaining Ring. Withdraw camshaft from reservoir leaving stop collar and cam lobes loose in reservoir.

Remove 68559 Retaining Rings and 48539 Washers from each end of 15364 Spur Gear Shaft. Slide gears from shaft, remove 68220 Woodruff Keys and other 48539 Washers from spur gear shaft, then withdraw shaft from drive bracket assembly.

Loosen 50555 Set Screw holding 15275 Worm Gear to 15363 Worm Gear Shaft. Note number and location of shims on worm gear shaft. Move worm gear clear of 68220 Woodruff Key and remove key. Withdraw worm gear shaft enough to allow removal of 48539 Washer and 69983 Spur Gear. Remove woodruff key, second 48539 Washer, 68559 Retaining Ring and worm gear, then withdraw worm gear shaft.

To assemble, reverse disassembly procedure.

LINCOLN ST. LOUIS
4010 GOODFELLOW BLVD • ST. LOUIS, MO. 63120 • (314) 383-5900



**SECTION - M3
PAGE - 5A**

LUBRICATOR	CAMSHAFT	END BEARING	OIL SEAL	PLUG (2 req'd)	GASKET (2 req'd)
800014	15416	40701	880149	15561	33142
800299	15324	880016	800149	15561	33142
800504	15415	40701	—	—	—
800614	15416	40701	—	—	—

SERVICE PARTS

PART	QUAN.	DESCRIPTION
15271	1	Worm
15275	1	Worm gear
15363	1	Worm gear shaft
15364	1	Spur gear shaft
15365	1	Drive shaft
15381	1	Spur gear
15417	1	Spur gear
15425	1	Stop collar
15484	1	Washer
31163	2	Washer
31176	1	Washer
48539	6	Washer
48554	11	Shim
48557	1	Washer
48560	2	Washer
48578	8	Shim
50522	1	Set screw
50555	1	Set screw
50555	*	Set screw
50558	1	Set screw
50762	2	Screw
68220	6	#3 Woodruff key
68220	*	#3 Woodruff key
68556	1	Retaining ring
68559	3	Retaining ring
69901	2	Thrust bearing
69914	*	Cam lobe
69930	1	Oil seal
69983	2	Spur gear
92865	1	Drive shaft bearing
92872	1	Drive bracket assembly
360892	1	Mounting shim

*One per pump station.

RETAIN THIS INFORMATION FOR FUTURE REFERENCE

When ordering replacement parts, list: Part Number, Description, Model Number, and Series Letter.
LINCOLN ST. LOUIS provides a Distributor Network that stocks equipment and replacement parts.