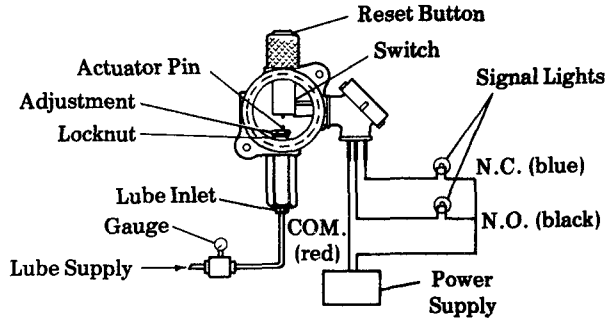
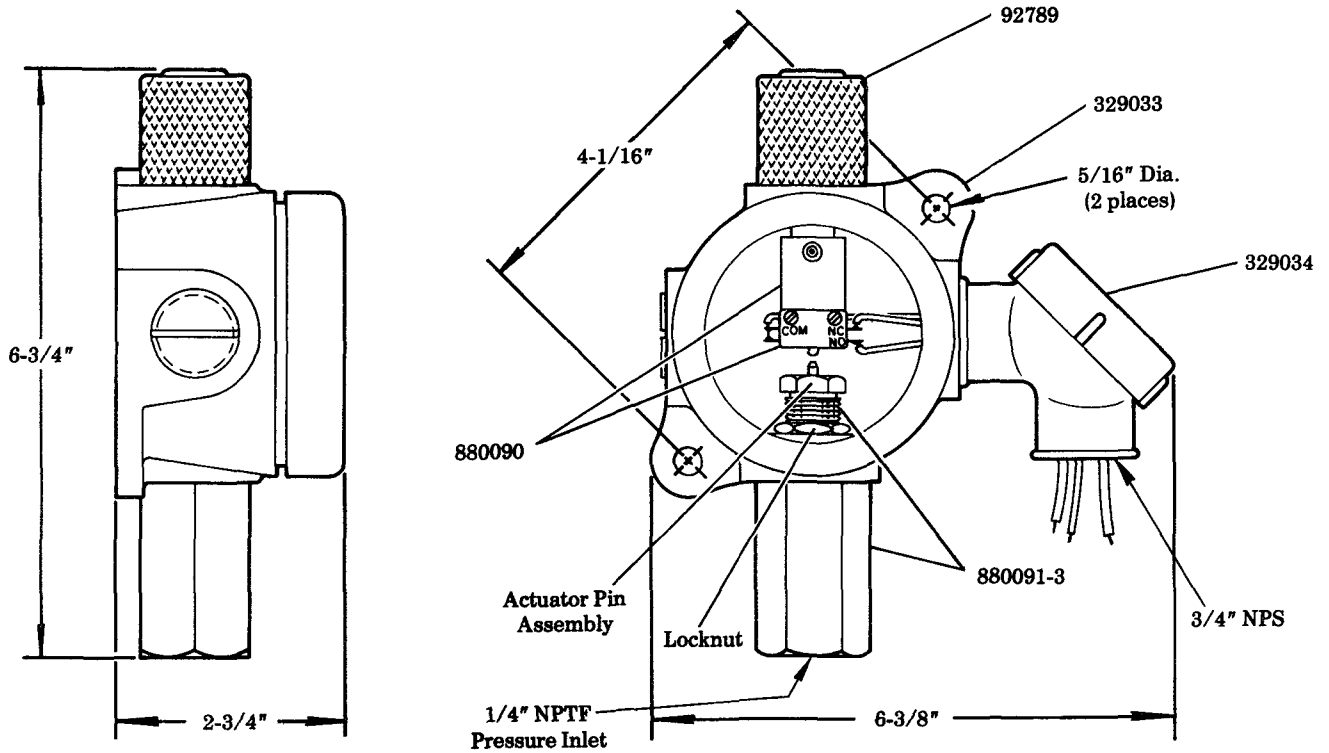


# PRESSURE SWITCH

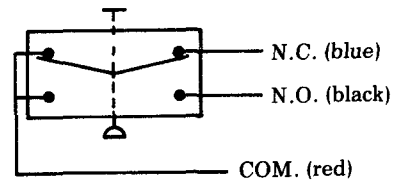


# Models 880089-3

## Series "B"



### WIRING DIAGRAM



### SPECIFICATIONS

Pressure Range .....1500 to 7500 PSI  
 Factory Setting .....5000 PSI  
 Switch Rating .....10 Amps at 125/250 VAC  
 10 Amps at 28 VDC Resistive

### ADJUSTMENT PROCEDURE

- 1) Remove housing cover to expose interior of switch.
- 2) Depress reset button fully to be sure system is deactivated. N.C. (blue) circuit light becomes lit. Loosen locknut for adjustment of actuator pin.
- 3) Pressurize unit to desired setting. Pressure should be allowed to stabilize. Check for leakage.
- 4) Adjust actuator pin assembly to activate switch so N.O. (black) circuit light becomes lit and N.C. (blue) circuit light is switched off.
- 5) Secure lock nut and vent system.
- 6) Double check system for proper settings.
- 7) Replace housing cover.

### SERVICE PARTS

PART	QUAN.	DESCRIPTION
92789	1	Pushbutton assembly
329033	1	Housing
329034	1	Short radius pull elbow assembly
880090	1	Adjustment pad assembly
880091-3	1	Pressure element assembly

**LINCOLN ST. LOUIS**  
 4010 GOODFELLOW BLVD • ST LOUIS, MO 63120 • (314) 383-5900



SECTION - **M30**  
 PAGE - **12**