

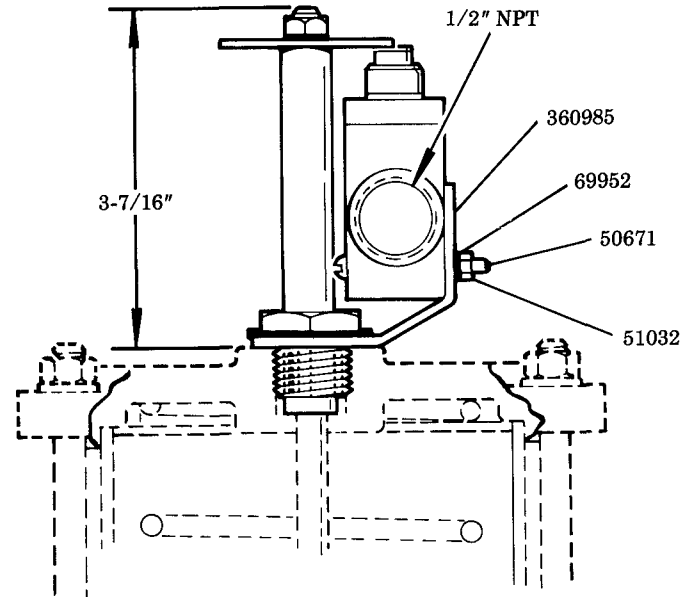
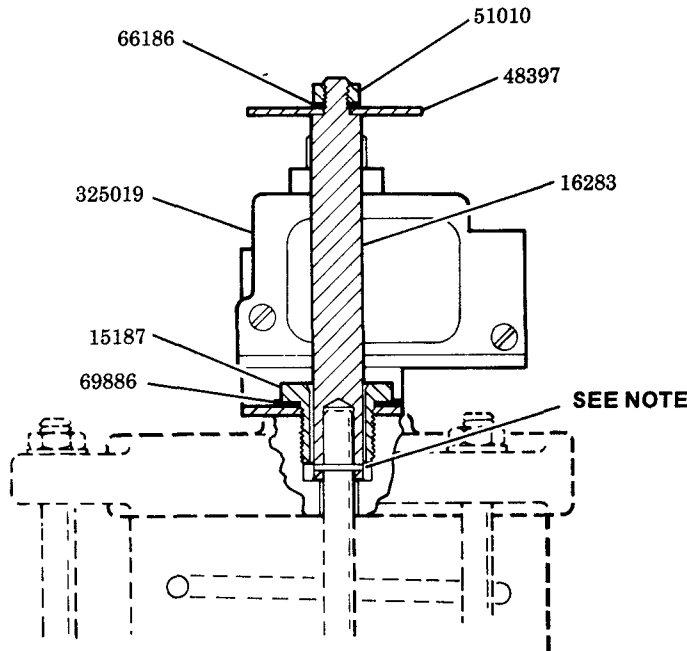
LOW LEVEL SWITCH ASSEMBLY



Model 84466

Series "A"

USED ON MODELS 87420, 87421 & 87423

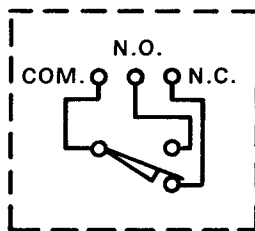


NOTE: Before installing switch assembly, groove pin must be removed. Place 16283 Adapter onto follower rod and reinsert groove pin.

ELECTRICAL RATING

15 Amps at 125, 250 & 480 VAC
 0.5 Amps at 125 VDC
 1/3 HP at 125 VAC
 1/2 HP at 250 VAC
 SPDT

CIRCUITRY



SERVICE PARTS

PART	QUAN.	DESCRIPTION
15187	1	Retainer
16283	1	Adapter
48397	1	Washer
50671	2	Screw
51010	1	Nut
51032	2	Nut
66186	1	Lockwasher
69886	1	Lockwasher
69952	2	Lockwasher
325019	1	Switch
360985	1	Mounting bracket

LINCOLN ST. LOUIS
 4010 GOODFELLOW BLVD • ST LOUIS, MO 63120 • (314) 383 5900



A DIVISION OF
McNEIL
 CORPORATION

SECTION - **M30**
 PAGE - **13**