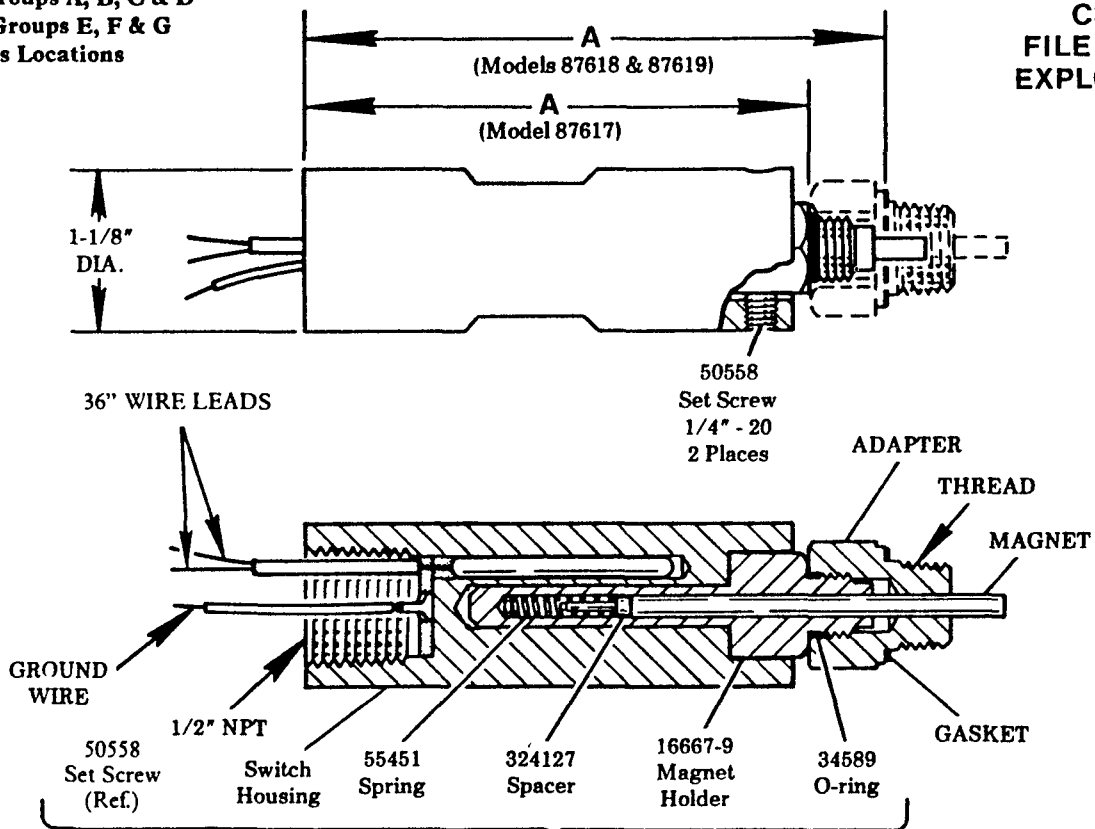


Class I, Groups A, B, C & D  
Class II, Groups E, F & G  
Hazardous Locations

SWITCH RATING: 10 WATTS, MAX.  
200 VDC MAX., 1/2 AMP. MAX.  
CSA CERTIFIED  
FILE NO. LR-49957  
EXPLOSION PROOF



© Indicates Change

© 350250 Proximity Switch Assembly

### MODEL CHART

Model	Thread	Adapter	Gasket	Magnet	Dimension "A"	Divider Valves
87617	7/16" - 20	—	—	324125	3-9/16" min., 3-13/16" max.	ML & MC
87618	5/8" - 18	16554-9	31159	324126	4-1/8" min., 4-3/8" max.	XL (sizes 02 thru 12)
87619	11/16" - 27	16555-9	31191	324126	4-1/8" min., 4-3/8" max.	XL (size 15)

### TO SET PROXIMITY SWITCH

Switch is factory set. If it becomes necessary to disassemble switch, it must be reset using the following procedure.

With switch reassembled, loosen two 50558 Set Screws and slide 16667-9 Magnet Holder all the way into switch housing. Connect ohmmeter to wire leads. Depress magnet until edge of magnet is approximately 1/16" away from the face of the magnet holder (Model 87616) or the adapter (Models 87618 and 87619) and temporarily hold or secure magnet in this position. Slide magnet holder out of switch housing approximately 1/2" and note ohmmeter reading indicating switch is closed. Slowly slide magnet holder into switch housing until ohmmeter indicates switch is open. Tighten set screws. Remove restraint from magnet and test switch by depressing magnet while noting that the switch opens when the magnet is 1/16" from the face of the magnet holder or adapter. Readjust if necessary.

**NOTE:** The switch should be closed when the magnet is approximately 1/8" from the face of the magnet holder or adapter.

### ALTERNATE METHOD

Install 16667-9 Magnet Holder with magnet, 324127 Spacer, 55451 Spring and adapter (Models 87618 & 87619) to divider valve assembly. Slide switch housing all the way onto magnet holder. Connect ohmmeter to wire leads. Cycle divider valves and check ohmmeter to see if proximity switch actuates. If not, slide switch housing out approximately 1/16" and tighten 50558 Set Screws. Cycle divider valves and check for proximity switch actuation. If necessary, continue to adjust by sliding switch housing out further until proximity switch actuates when divider valves are cycled.