

LOW LEVEL SWITCH ASSEMBLY



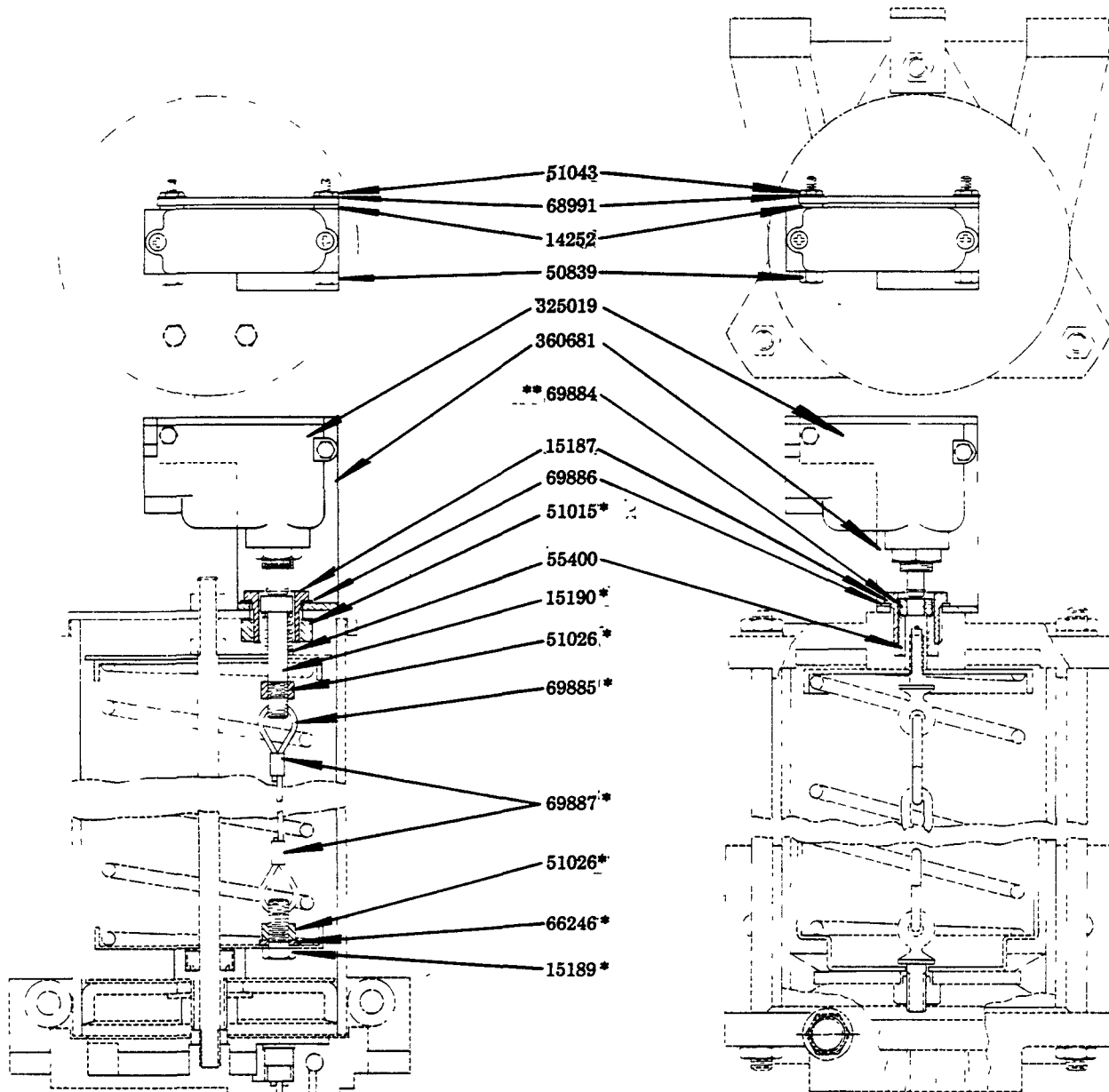
Model 87852

ELECTRICAL DATA

- 15 Amps at 125, 250 & 480V A.C.
- 0.5 Amp at 125V D.C.
- 1/3 HP at 125V A.C.
- 1/2 HP at 250V A.C.
- S.P.D.T.

LP GREASE RESERVOIR
3 & 5 lb. Capacity

APPS GREASE RESERVOIR
5, 10 & 15 lb. Capacity



*Used on 3 lb. and 5 lb. LP Grease Reservoirs only.

**Used on 5 lb., 10 lb., and 15 lb. APPS Grease Reservoirs only.



LINCOLN, One Lincoln Way
St. Louis, Missouri 63120-1578
(314) 679-4200 Customer Service, (314) 679-4300

SECTION - M30
PAGE - 3

PART NO.	QUAN.	DESCRIPTION
14252	2	Spacer
15187	1	Retainer
15189	1	Cable Support Bolt
15190	1	Switch Actuator
50839	2	Hex. Hd. Machine Screw
51015	1	Crankshaft Nut
51026	2	Hex. Nut
51043	2	Hex. Nut
55400	1	Spring
66246	1	Lockwasher
68991	2	Lockwasher
69884	1	Collar
69885	1	Cable
69886	1	Lockwasher
69887	2	Cable Clip
325019	1	Limit Switch
360681	1	Bracket

———— RETAIN THIS INFORMATION FOR FUTURE REFERENCE ————

When ordering replacement parts, list: Part Number, Description, Model Number, and Series Letter.

LINCOLN ST. LOUIS provides a Distributor Network that stocks equipment and replacement parts.