

200 COUNTS/PINT
INCLUDES VITON OIL SEALS
MAX. OPERATING PRESSURE 6000 PSI

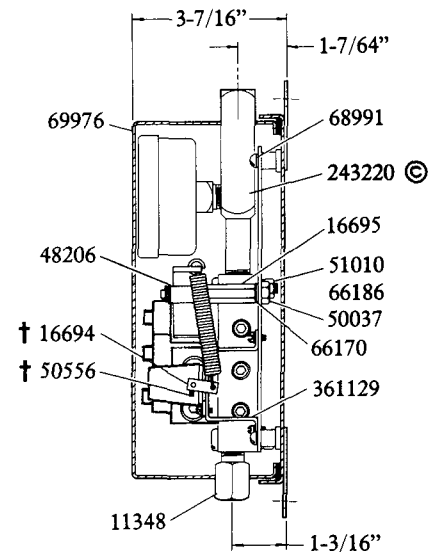
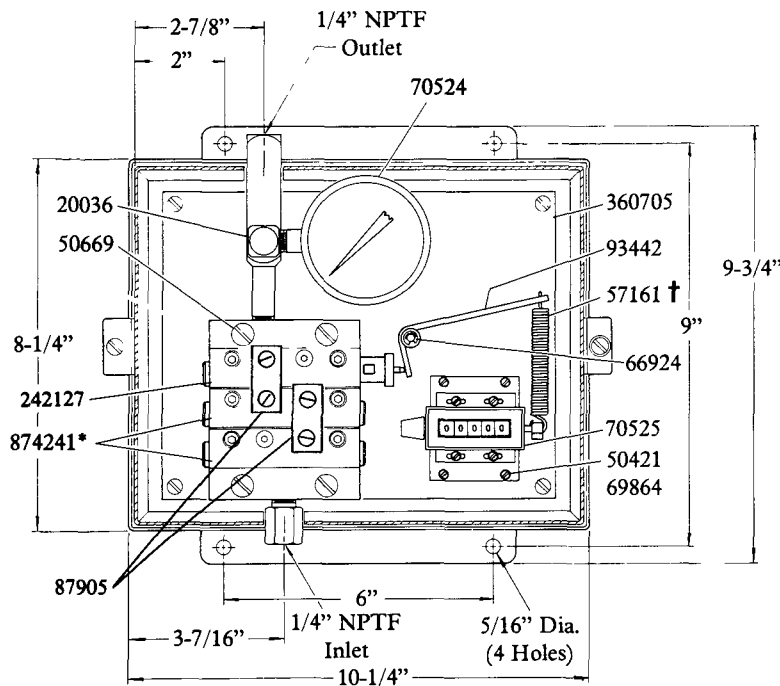
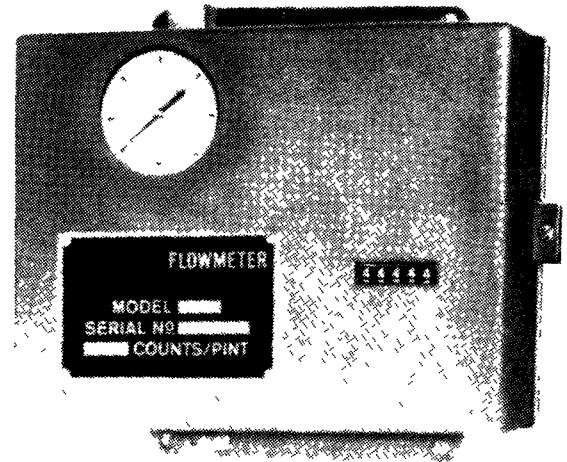
DESCRIPTION

The Model 87806 Flow Meter measures and mechanically records the total volume of lubricant to a Modular Lube System. The meter records 200 counts per pint of lubricant on a counter visible on the front of the flow meter enclosure. A 6000 psi pressure gauge is included on the face of the enclosure for a constant check of the system's operating pressure.

Lube inlet and outlet connections are 1/4" NPTF. Bleed screws are included in the divider valves to assist in purging air from the system.

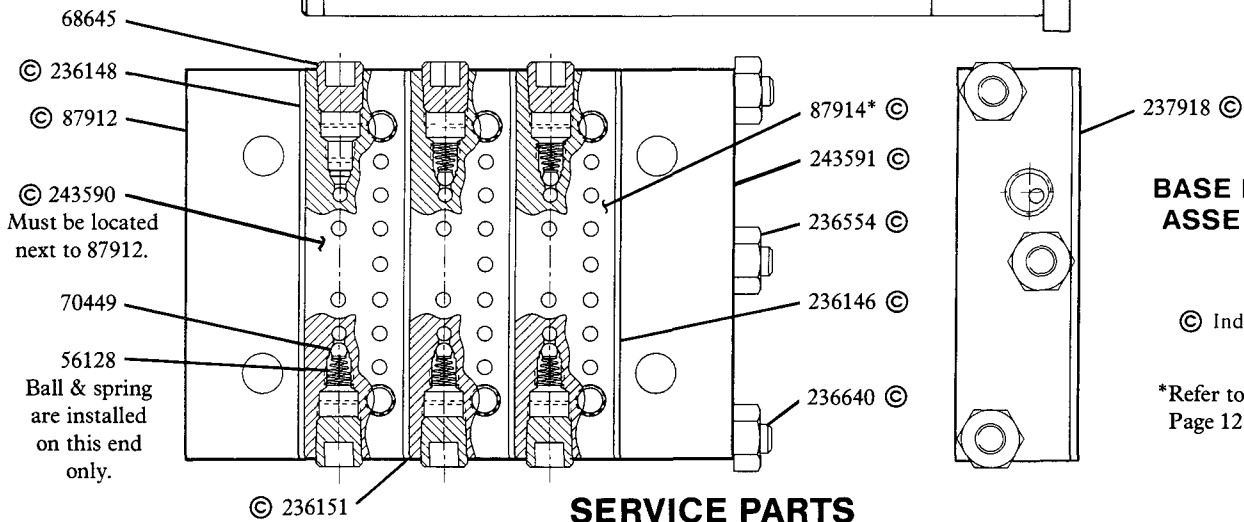
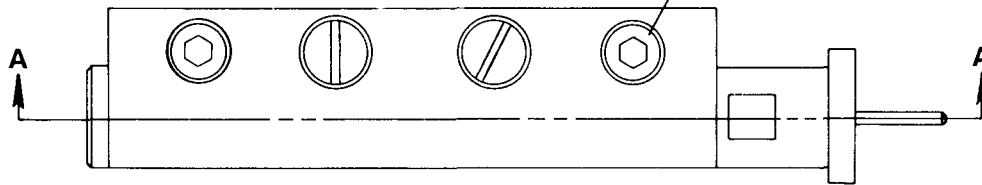
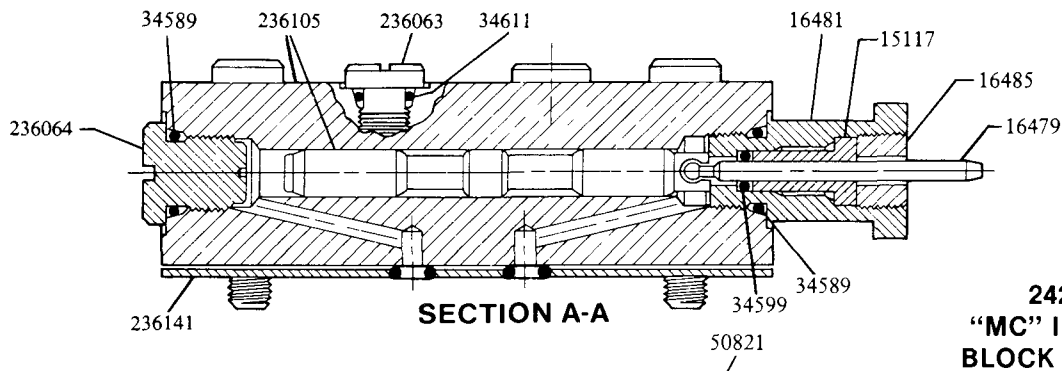
† Spring and Actuating Lever Adjustment

- 1) 50556 Set Screw and 16694 Actuating Lever are bonded with Loctite. Loosen set screw from actuating lever.
- 2) Carefully break loose actuating lever and remove from counter shaft. Clean lever and shaft thoroughly. Lever must rotate freely on counter shaft.
- 3) Apply Loctite #680 (green) to set screw and counter shaft. DO NOT allow Loctite to go into bearings on counter shaft. Replace actuating lever.
- 4) 242127 Indicator Pin should be fully retracted. Rotate actuating lever counter-clockwise taking up all slack in spring. Tighten set screw.



© Indicates Change

*Refer to Section M50, Page 12 Series.



Part	Qty.	Description	Part	Qty.	Description
11348	1	Inlet connector	69976	1	Enclosure assembly
15117	1	Bearing	70449	1	Ball
16479	1	Indicator pin	70524	1	Pressure gauge
16481	1	Indicator body	70525	1	Counter
16485	1	Bearing retainer plug	87905	2	Crossporting bar
16694	1	Actuating lever	87912	1	Inlet block ass'y.
16695	1	Stud	87914	2	Intermediate block ass'y.
20036	1	Elbow	93442	1	Lever
34589	2	O-ring (Viton)	236063	2	Enclosure plug
34599	1	O-ring (Viton)	236064	1	Enclosure plug
34611	2	O-ring (Viton)	236105	1	Piston & divider block ass'y.
48206	2	Packing Washer	236141	1	Gasket plate
50037	1	Screw	236146	1	Gasket plate (Viton)
50421	8	Screw	236148	1	Gasket plate (Viton)
50556	1	Screw	236151	2	Gasket plate (Viton)
50669	4	Screw	236554	3	Nut
50821	2	Screw	236640	3	Tie rod
51010	4	Nut	237918	2	Spacer
56128	1	Spring	242127	1	"MC" Indicator block ass'y.
57161	1	Spring	243220	1	Outlet connector
66170	1	Lockwasher	243590	1	Special intermediate block
66186	4	Lockwasher	243591	1	Special end block ass'y.
66924	1	Retaining ring	360705	1	Mounting panel
68645	6	Pipe plug	361129	1	Counter bracket
68991	4	Lockwasher	874241	2	"MC" Indicator block ass'y.
69864	8	Lockwasher			

RETAIN THIS INFORMATION FOR FUTURE REFERENCE

When ordering replacement parts, list: Part Number, Description, Model Number and Series Letter.

LINCOLN provides a Distributor Network that stocks equipment and replacement parts.