

# PNEUMATIC FLOW METER

200 COUNTS/PINT  
INCLUDES VITON OIL SEALS



# Model 87853

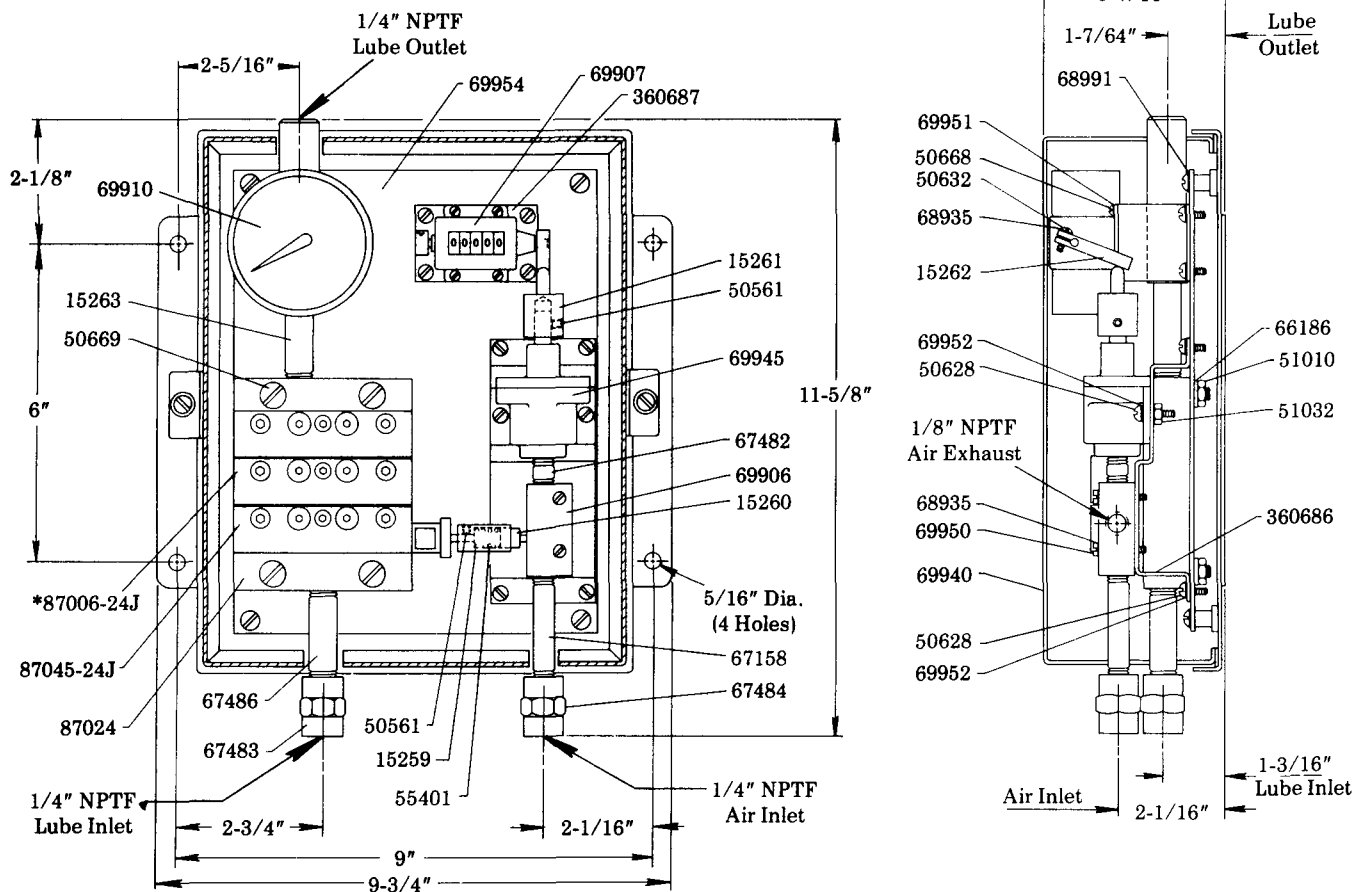
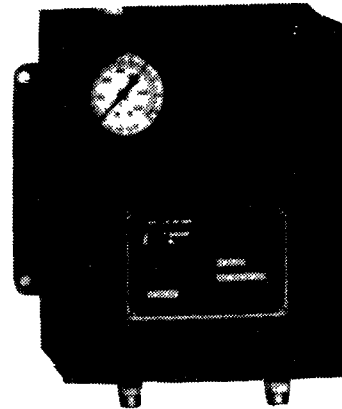
## Series "B"

### DESCRIPTION

The Model 87853 Flow Meter measures and pneumatically records the total volume of lubricant to a Modular Lube System. The meter records 200 counts/pint which is registered at a counter on the front of the Flow Meter enclosure. A 6,000 psi pressure gauge is also included on the face of the enclosure for a constant check of the system's operating pressure.

This Flow Meter can be operated with pressures as low as 15 psi and as high as 150 psi. Air consumption is .057 cubic feet per pint of lubricant flow. Air Inlet is 1/4" NPTF, Exhaust is 1/8" NPTF.

Lube Inlet and Outlet connections are 1/4" NPTF. Bleed screws are included in the base plate and divider valves to assist in purging air from the system.

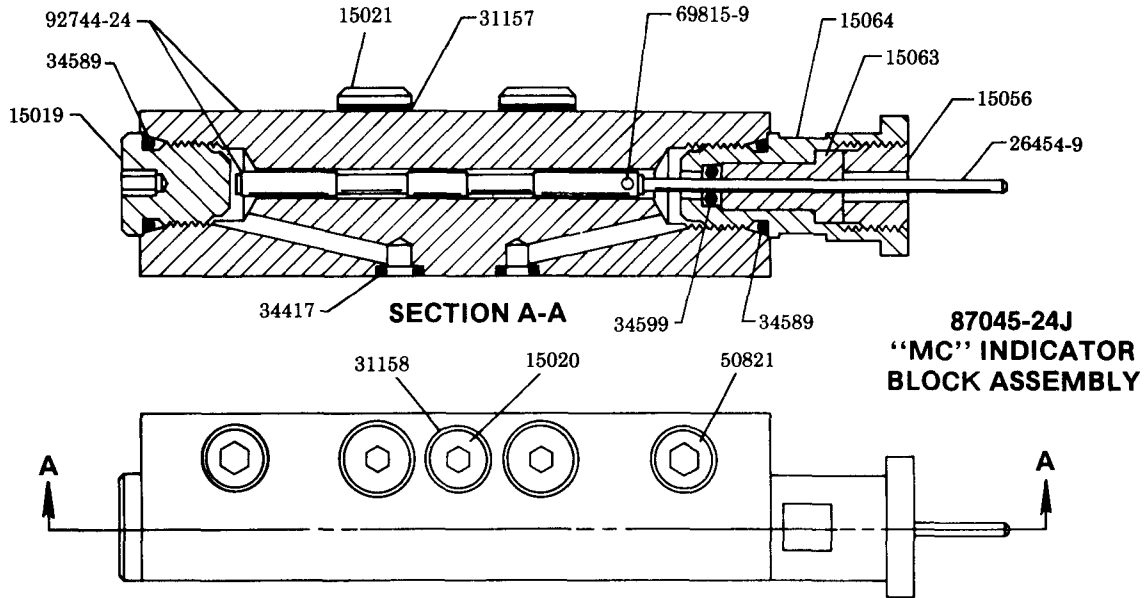


\* Refer to Section M50, Page 3 Series.

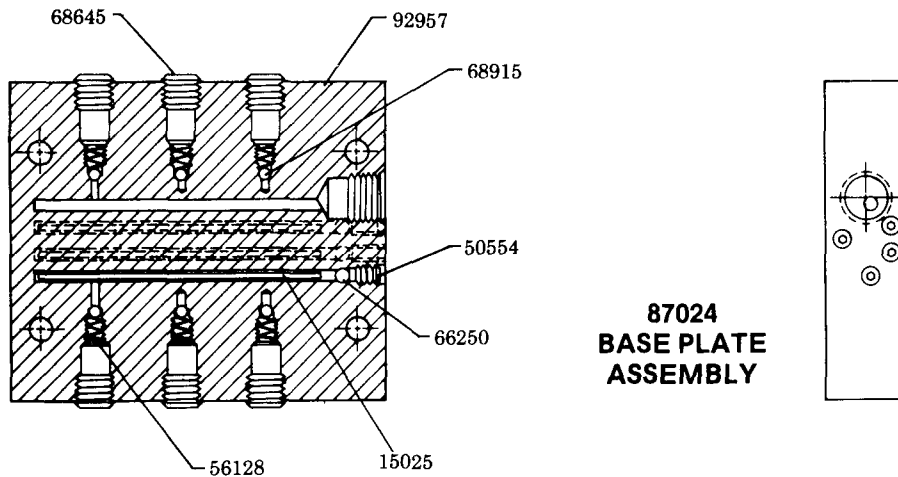
**LINCOLN ST. LOUIS**  
4010 GOODFELLOW BLVD • ST LOUIS, MO 63120 • (314) 383 5900



SECTION -M31  
PAGE -6A



**87045-24J  
"MC" INDICATOR  
BLOCK ASSEMBLY**



**87024  
BASE PLATE  
ASSEMBLY**

**SERVICE PARTS**

PART	QUAN.	DESCRIPTION	PART	QUAN.	DESCRIPTION	PART	QUAN.	DESCRIPTION
15019	1	Enclosure plug	50561	2	Screw	68935	3	Lockwasher
15020	1	Center plug	50628	10	Screw	68991	4	Lockwasher
15021	2	Outlet plug	50632	1	Screw	69815-9	1	Groove pin
15025	3	Insert rod	50668	4	Screw	69906	1	Air valve
15056	1	Bearing retainer plug	50669	4	Screw	69907	1	Counter
15063	1	Bearing	50821	2	Screw	69910	1	Pressure gauge
15064	1	Indicator body	51010	4	Nut	69940	1	Enclosure assembly
15259	1	Spring housing	51032	2	Nut	69945	1	Air clamp
15260	1	Button	55401	1	Spring	69950	2	Screw
15261	1	Adapter	56128	6	Spring	69951	4	Lockwasher
15262	1	Lever	66186	4	Lockwasher	69952	10	Lockwasher
15263	1	Outlet connector	66250	4	Ball	69954	1	Mounting plate
26454-9	1	Indicator pin	67158	1	Inlet nipple	87006-24J	2	"MC" Divider valve assembly
31157	2	Gasket	67482	1	Restrictor nipple	87024	1	Base plate assembly
31158	1	Gasket	67483	1	Pipe connector	87045-24J	1	"MC" Indicator block assembly
34417	9	O-ring	67484	1	Pipe connector	92744-24	1	Piston & divider block assembly
34589	2	O-ring	67486	1	Inlet nipple	92957	1	Base plate assembly
34599	1	O-ring	68645	6	Pipe plug	360686	1	Bracket
50554	4	Screw	68915	6	Ball	360687	1	Bracket

**RETAIN THIS INFORMATION FOR FUTURE REFERENCE**

When ordering replacement parts, list: Part Number, Description, Model Number, and Series Letter.

LINCOLN ST. LOUIS provides a Distributor Network that stocks equipment and replacement parts.