

PNEUMATIC FLOW METER

200 COUNTS/PINT
INCLUDES VITON OIL SEALS



Model 87853

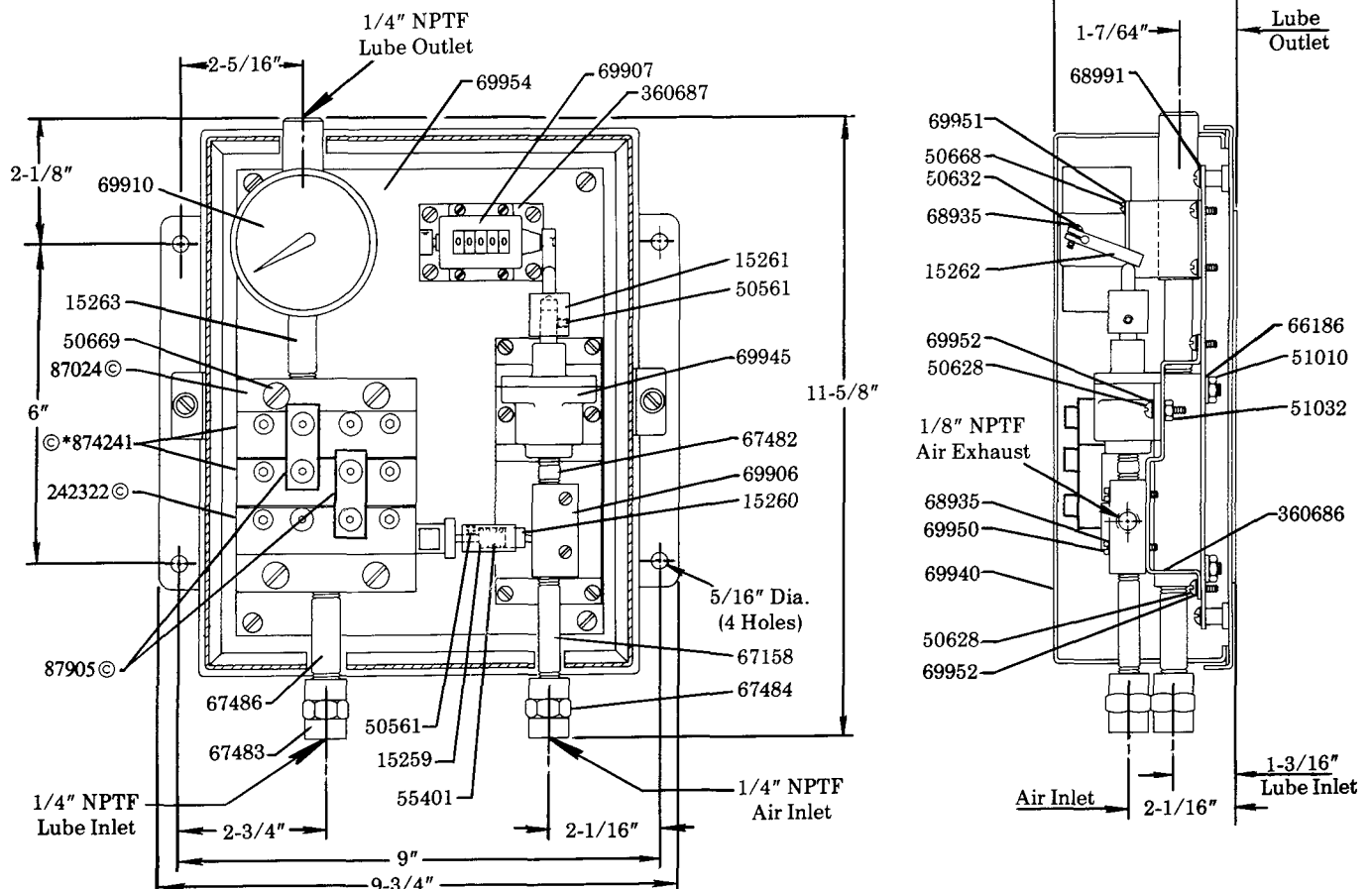
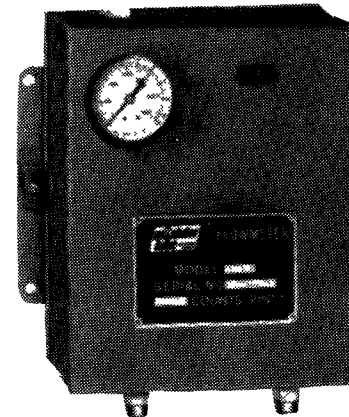
Series "C"

DESCRIPTION

The Model 87853 Flow Meter measures and pneumatically records the total volume of lubricant to a Modular Lube System. The meter records 200 counts/pint which is registered at a counter on the front of the Flow Meter enclosure. A 6,000 psi pressure gauge is also included on the face of the enclosure for a constant check of the system's operating pressure.

This Flow Meter can be operated with pressures as low as 15 psi and as high as 150 psi. Air consumption is .057 cubic feet per pint of lubricant flow. Air Inlet is 1/4" NPTF, Exhaust is 1/8" NPTF.

Lube Inlet and Outlet connections are 1/4" NPTF. Bleed screws are included in the base plate and divider valves to assist in purging air from the system.



© Indicates Change

* Refer to Section M50, Page 3 Series.

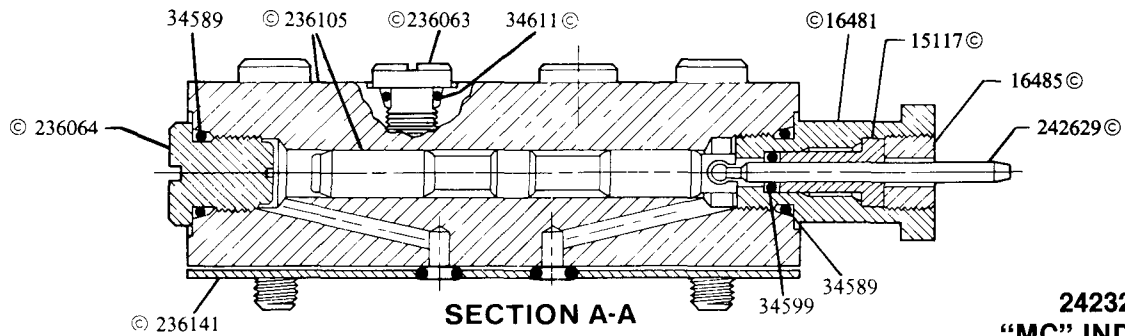
LINCOLN

A PENTAIR COMPANY

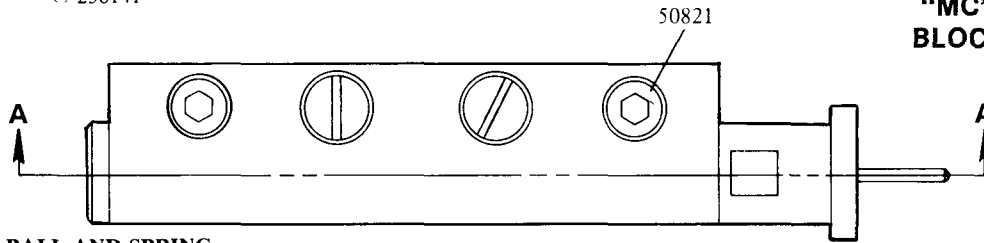
One Lincoln Way
St. Louis, MO 63120-1578
(314) 679-4200

© Copyright 1991
Printed in U.S.A.

SECTION - M31
PAGE - 6B

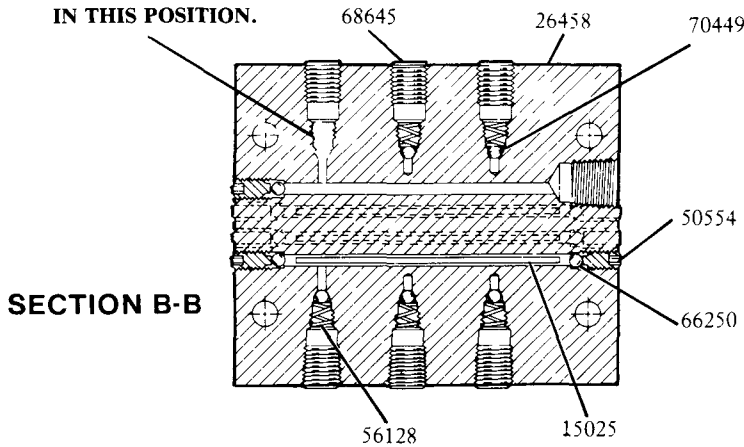


242322 ©
**"MC" INDICATOR
 BLOCK ASSEMBLY**



**NOTE: NO CHECK BALL AND SPRING
 IN THIS POSITION.**

© Indicates Change



**87024
 BASE PLATE
 ASSEMBLY**

CAUTION:

When replacing any old style divider valve with a new style 874241 or 842322, the check ball and spring in the base plate assembly **MUST** be removed, as shown in the illustration.

SERVICE PARTS

Part	Qty.	Description	Part	Qty.	Description	Part	Qty.	Description
15025	3	Insert rod	50821	2	Screw	69940	1	Enclosure assembly
15117	1	Bearing	51010	4	Nut	69945	1	Air clamp
15259	1	Spring housing	51032	2	Nut	69950	2	Screw
15260	1	Button	55401	1	Spring	69951	4	Lockwasher
15261	1	Adapter	56128	5	Spring	69952	10	Lockwasher
15262	1	Lever	66186	4	Lockwasher	69954	1	Mounting plate
15263	1	Outlet connector	66250	4	Ball	70449	5	Ball
16481	1	Indicator body	67158	1	Inlet nipple	87024	1	Base plate assembly
16485	1	Bearing retainer plug	67482	1	Restrictor nipple	87905	2	Crossporting bar
26458	1	Base plate assembly	67483	1	Pipe connector	236063	2	Enclosure plug
34611	2	O-ring (Viton)	67484	1	Pipe connector	236064	1	Enclosure plug
34589	2	O-ring (Viton)	67486	1	Inlet nipple	236105	1	Piston & divider block assembly
34599	1	O-ring (Viton)	68645	6	Pipe plug	242322	1	"MC" Indicator block assembly
50554	4	Screw	68935	3	Lockwasher	242629	1	Indicator pin
50561	2	Screw	68991	4	Lockwasher	360686	1	Bracket
50628	10	Screw	69906	1	Air valve	360687	1	Bracket
50632	1	Screw	69907	1	Counter	874241	2	"MC" Divider valve assembly
50668	4	Screw	69910	1	Pressure gauge			
50669	4	Screw						

RETAIN THIS INFORMATION FOR FUTURE REFERENCE

When ordering replacement parts, list: Part Number, Description, Model Number, and Series Letter.

LINCOLN provides a Distributor Network that stocks equipment and replacement parts.