

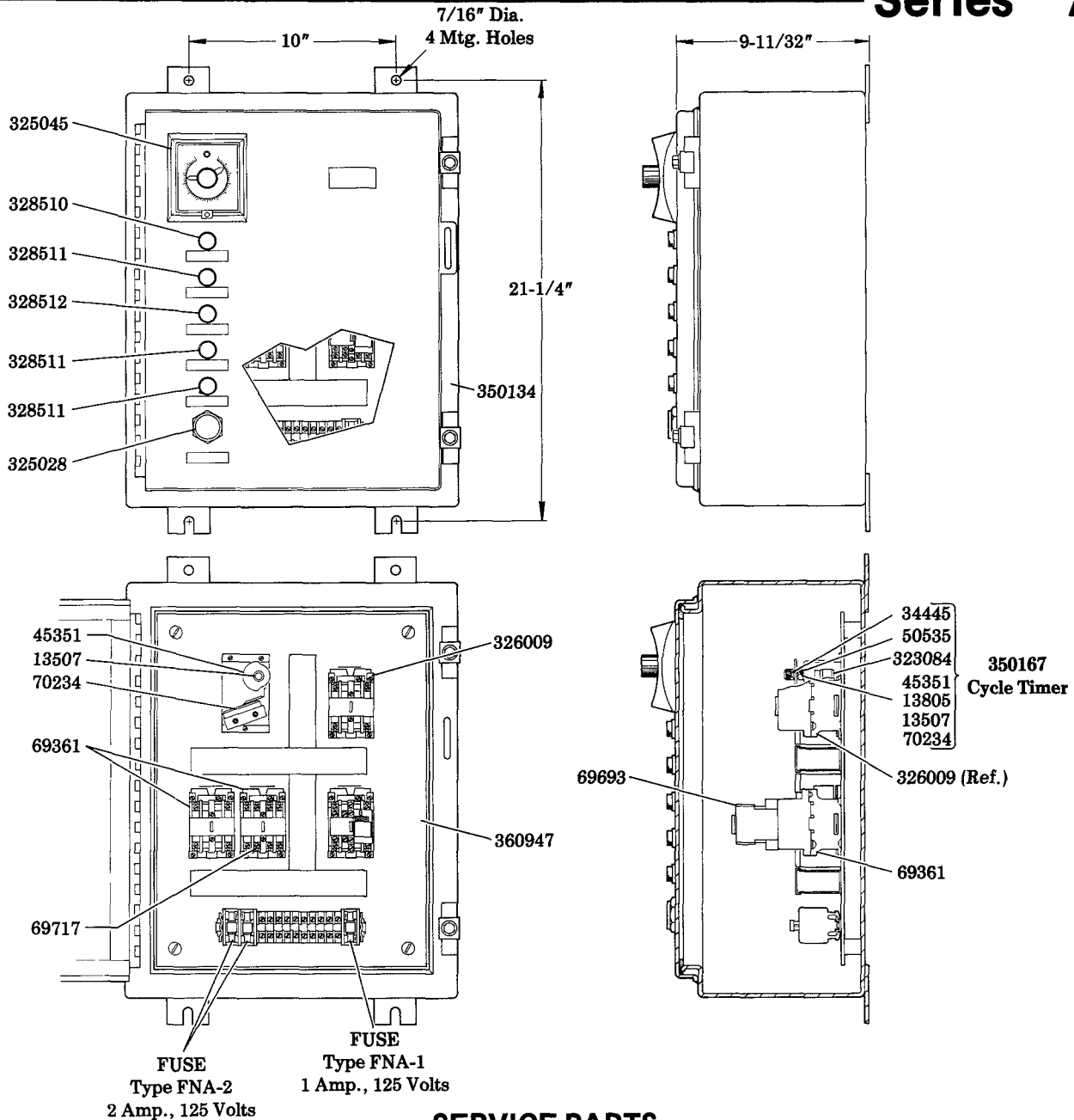
# CPS-200 CONTROL PANEL

115 VOLTS, 60 HZ.  
1 HOUR TIMER



# Model 130258

## Series "A"



### SERVICE PARTS

PART	QUAN.	DESCRIPTION	PART	QUAN.	DESCRIPTION	PART	QUAN.	DESCRIPTION
13507	1	Knob	69717	2	Relay contacts	328511	3	Neutral lamp
13805	1	Camshaft	70234	1	Micro switch	328512	1	Red lamp
34445	1	Gasket	323084	1	Timing motor	350134	1	Enclosure
45351	1	Cam	325028	1	Pushbutton	350167	1	Cycle timer assembly
50535	1	Set screw	325045	1	Sequence timer	360947	1	Mounting plate
69361	3	Relay	326009	1	Latch relay			
69693	1	Pneumatic timing head	328510	1	Amber lamp			

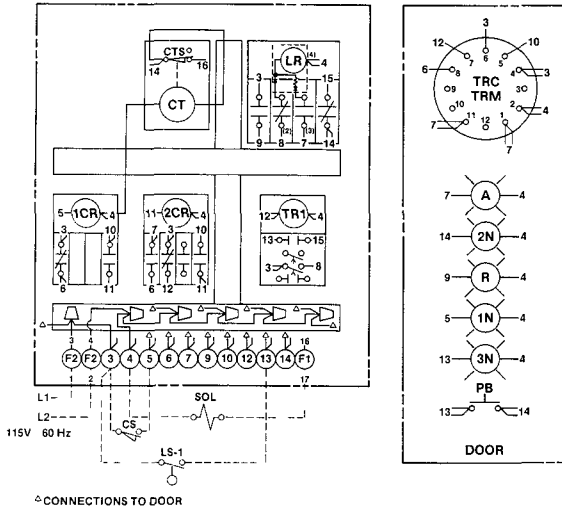
**LINCOLN ST. LOUIS**  
4010 GOODFELLOW BLVD · ST. LOUIS, MO 63120 · (314) 383 5900



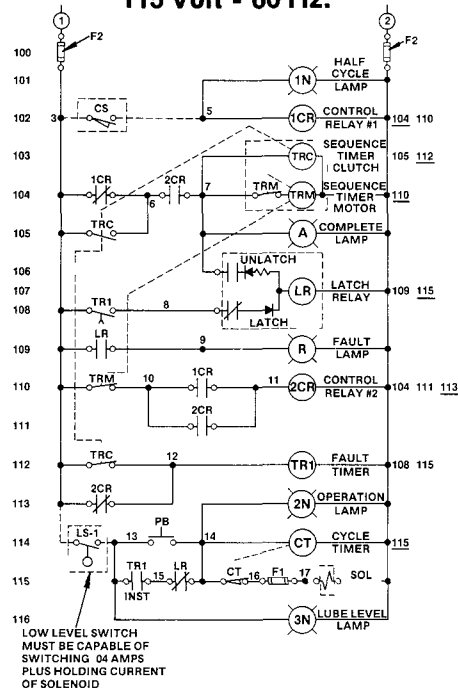
A DIVISION OF  
**McNEIL**  
CORPORATION

SECTION - **M33**  
PAGE - **20**

## POSITION DIAGRAM



## ELEMENTARY DIAGRAM 115 Volt - 60 Hz.



CODE	PART	DESCRIPTION	CODE	PART	DESCRIPTION
A	328510	COMPLETE LAMP (AMBER)	1CR		CONTROL RELAY #1
1N		HALF CYCLE LAMP (NEUT )	2CR	69361	CONTROL RELAY #2
2N	328511	OPERATION LAMP (NEUT )	TR1	69361	FAULT TIMER
3N		LUBE LEVEL LAMP (NEUT.)		69693	
R	328512	LUBE FAULT LAMP (RED)	F1	TYPE FNA-1	FUSE
PB	325028	MANUAL RUN PUSHBUTTON	F2	TYPE FNA-2	FUSE
CT	PART OF 350167	CYCLE TIMER MOTOR	SOL	*	AIR SOLENOID VALVE
CTS		CYCLE TIMER SWITCH	CS	*87070	DIVIDER VALVE CYCLE SWITCH
TRC	PART OF 325045	SEQUENCE TIMER CLUTCH	LS-1	*	LOW LEVEL SWITCH
TRM		SEQUENCE TIMER MOTOR			
LR	326009	LATCH RELAY			

\*NOT INCLUDED WITH MODEL 130258  
MUST BE ORDERED SEPARATELY

## OPERATION

Sequence timer is energized when machine is turned on (amber "Complete" lamp and neutral "Lube Level" lamp light). When the sequence timer times out, the cycle timer is energized (amber "Complete" lamp off, neutral "Operation" lamp on) energizing air solenoid valve. Air is allowed to the pump which delivers lubricant to the divider valve system. Cycle timer operates pump at 10 cycles per minute. A cycle switch, located on a divider valve in the system, signals the control panel upon shift of the divider valve pistons (neutral "Half-Cycle" lamp lights) indicating one-half lube cycle has been completed. On the return shift of the divider valve pistons, a

cycle switch signal de-energizes "Half-Cycle" lamp and air solenoid valve is de-energized shutting off the pump. Amber "Complete" lamp lights (neutral "Operation" lamp off) and sequence timer begins timing. If the lubrication cycle is not completed during the programmed pumping cycle or lubricant level in reservoir becomes too low (neutral "Lube Level" lamp off), the red "Fault" lamp will light and pump will stop. To restore system to operation, correct fault then depress "Manual Run" pushbutton on panel enclosure and hold until red lamp goes out.

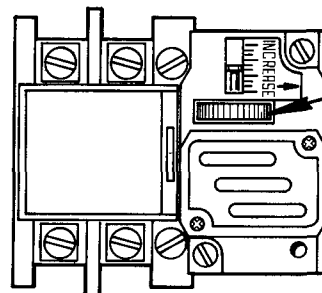
## TO SET LUBRICATION FREQUENCY

A manual run pushbutton on the panel enclosure can be used to test or manually operate the system to determine actual cycle time. Depress pushbutton and hold to initiate a lube cycle. By timing the interval from lube cycle initiation until amber "Complete" lamp lights and adding approximately 50% of this time, the total cycle time can be determined.

### EXAMPLE:

One lubrication cycle requires 2 minutes. Adding 50% reserve cycle time results in a total cycle time of 3 minutes. Set 69693 Pneumatic Relay for an "on delay" of 3 minutes.

A sequence timer on panel enclosure is used to set cycle frequency, with a maximum of 60 minutes and a minimum setting of 2 minutes between lube cycles. When set on 30, the timer will initiate a lube cycle every 30 minutes.



"ON DELAY"  
ADJUSTMENT  
THUMBWHEEL

**69693**  
**PNEUMATIC RELAY**