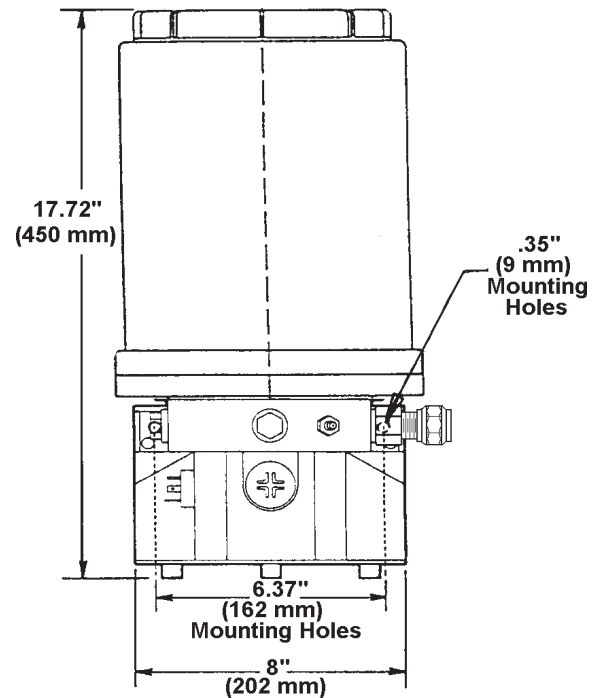
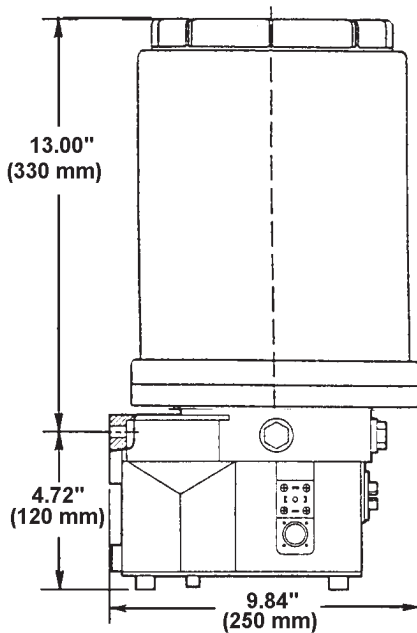


OWNER/OPERATOR MANUAL



WARNING
Do Not use pump without pressure relief valve.

SPECIFICATIONS

| | |
|------------------------------------|--|
| Electrical Requirements | |
| Model 94812 | 12 VDC @ 3.5 amps |
| Model 94824 | 24 VDC @ 2 amps |
| Enclosure Rating | IP 6K9K - Protected from water sprayed in all directions. |
| On Time | 2 minutes minimum 30 minutes maximum in 2 minute increments |
| Off Time | 1 hour minimum 15 hours maximum in 1 hour increments |
| Pump Output | 0.171 cu. in./min (2.8 cm/min)© |
| Outlet Connection | 1/8" NPT (female) |
| Maximum Recommended | |
| Operating Pressure | 3600 psi (248 bar) |
| Reservoir Capacity | 488 cu. in. (8000 cc) |
| Lubricant | Greases up to NLGI grade 2 (depending on the operating temperature and type of lubricant) |
| Temperature Range | - 13°F(-25°C) to +158°F(+70°C) |
| Pressure Relief Valve | 4000 psi +/- 250 psi (276 bar) +/- (17 bar) |

© Indicates Change

DESCRIPTION

The chassis lube pump is electrically operated and used in a progressive type centralized lubrication system. The pump consists of a pump housing, electric gear motor, a timer and a plastic reservoir with stirring paddle. The high operating pressure allows the pump to supply lubricant up to NLGI #2 grease.

MOUNTING THE PUMP

Select an easily accessible place of installation which allows access to the timer and lubricant reservoir filler fitting. The pump must be mounted vertically on an even surface by means of three bolts. (See Fig. 1 on page 3.)

TO FILL RESERVOIR

Fill the reservoir through the grease fitting located at the base of the reservoir, using a hand operated grease pump. Refill reservoir when grease reaches "MIN" mark located on the reservoir. Fill the reservoir up to the "MAX" mark located on the reservoir.

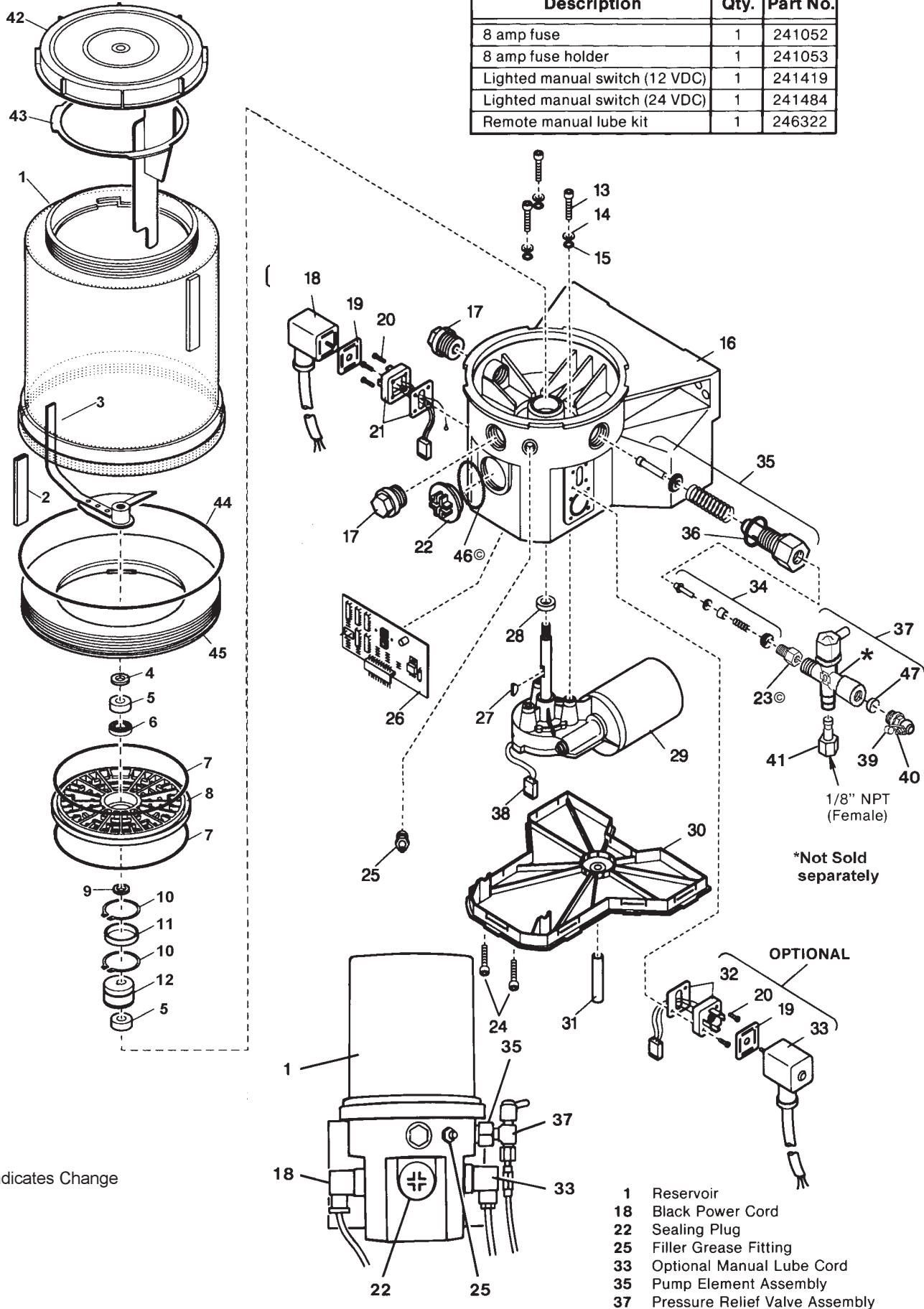
TO PRIME SYSTEM

Pump & Supply Line: After reservoir has been filled with recommended lubricant, loosen the supply line fitting. Operate the pump until lubricant flows from outlet, then tighten fitting.

Feed Lines: Pre-fill each feed line with lubricant before connecting to outlet of divider valve and bearing.

SYSTEM ACCESSORIES

| Description | Qty. | Part No. |
|--------------------------------|------|----------|
| 8 amp fuse | 1 | 241052 |
| 8 amp fuse holder | 1 | 241053 |
| Lighted manual switch (12 VDC) | 1 | 241419 |
| Lighted manual switch (24 VDC) | 1 | 241484 |
| Remote manual lube kit | 1 | 246322 |



*Not Sold separately

OPTIONAL

© Indicates Change

- 1 Reservoir
- 18 Black Power Cord
- 22 Sealing Plug
- 25 Filler Grease Fitting
- 33 Optional Manual Lube Cord
- 35 Pump Element Assembly
- 37 Pressure Relief Valve Assembly

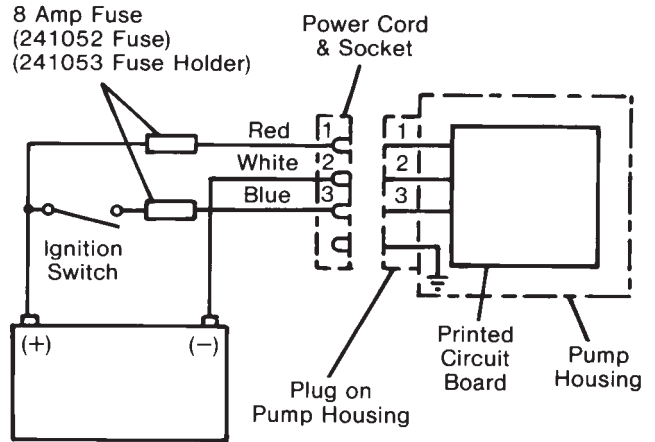
ELECTRICAL CONNECTIONS

Connect black power cord as follows:

Red wire connects to 8 amp fuse then to Battery (+).

White wire connects to Battery (-).

Blue wire connects to 8 amp fuse, to ignition switch, then to Battery (+).



PARTS LIST

| ITEM NO. | DESCRIPTION | QTY. | PART NUMBER /KIT NUMBER |
|----------|--------------------------|------|---|
| 1 | Reservoir | 1 | 247674 |
| 2 | Hose | 1 | 247676 |
| 3 | Stirring paddle | 1 | 247675 |
| 4 | Washer | 1 | 247679 |
| 5 | Bearing ring | 2 | part of Kit 246434 |
| 6 | Bearing | 1 | part of Kit 246434 |
| 7 | O-ring | 2 | 246424 |
| 8 | Intermediate plate | 1 | 246425 |
| 9 | Shim | 1 | part of Kit 246434 |
| 10 | Snap ring | 2 | part of Kit 246434 |
| 11 | Inner ring | 1 | part of Kit 246434 |
| 12 | Eccentric cam | 1 | 246427 |
| 13 | Screw | 3 | part of Kits 246435 & 246436 |
| 14 | Washer | 3 | part of Kits 246435 & 246436 |
| 15 | O-ring | 3 | part of Kits 246435, 246436 & 246437 |
| 16 | Pump housing | 1 | 246426 |
| 17 | Closure plug | 2 | 246422 |
| 18 | Socket with cord | 1 | part of Kits 246429 |
| 19 | Flat packing | 1 | part of Kits 246429, 246440, 246441, & 246431 |
| 20 | Screws | 4 | part of Kits 246440 & 246441 |
| 21 | Plug | 1 | part of Kit 246440 |
| 22 | Sealing plug | 1 | 246423 |
| 23 | Nipple | 1 | 226141055 |
| 24 | Screw | 10 | 206137967 |
| 25 | Grease fitting | 1 | 5050 |
| 26 | Printed circuit board | 1 | 246420 |
| 27 | Woodruff key | 1 | part of Kits 246435 & 246436 |
| 28 | Radial seal | 1 | part of Kits 246435, 246436 & 246437 |
| 29 | 12 VDC motor | 1 | part of Kit 246435 |
| 29 | 24 VDC motor | 1 | part of Kit 246436 |
| 30 | Housing cover | 1 | 246421 |
| 31 | Hose | 1 | not sold |
| 32 | Plug | 1 | part of Kit 246441 |
| 33 | Socket | 1 | part of Kit 246431 |
| 34 | Check valve | 1 | part of Kit 600268762 |
| 35 | Pump element | 1 | part of Kit 600268762 |
| 36 | Gasket | 1 | part of Kit 600268762 |
| 37 | Pressure relief assy. | 1 | 249567 |
| 38 | Plug for motor | 1 | part of Kits 243435 & 246436 |
| 39 | Grease cap | 1 | 242125 |
| 40 | Grease fitting | 1 | 249568 |
| 41 | Adapter for relief assy. | 1 | 249565 |
| 42 | Lid | 1 | 247671 |
| 43 | Fixed paddle | 1 | 247672 |
| 44 | O-ring | 1 | 247677 |
| 45 | Adapter | 1 | 247678 |
| 46 | O-ring | 1 | 219141382 |
| 47 | Seal | 1 | 249569 |

REMOTE MANUAL LUBE PUSHBUTTON

If a remote manual lube pushbutton is required, order a 246322 Manual Lube Kit (consisting of a 32 ft. cord and plug) and:

for a 12 volt pump, order
241419 - Lighted Manual Lube Switch

for a 24 volt pump, order
241484 - Lighted Manual Lube Switch

IMPORTANT:

When using a Model 94812 or 94824 to replace an old style 103 pump with remote manual lube switch, only the 246322 Manual Lube Kit is required.

The wiring for the remote light used on the 103 pump must be changed for the new Models 94812 and 94824. The existing wire that connects the light to the Battery (-) must be disconnected. Reconnect it to the Battery (+).

MOUNTING HOLE LOCATIONS

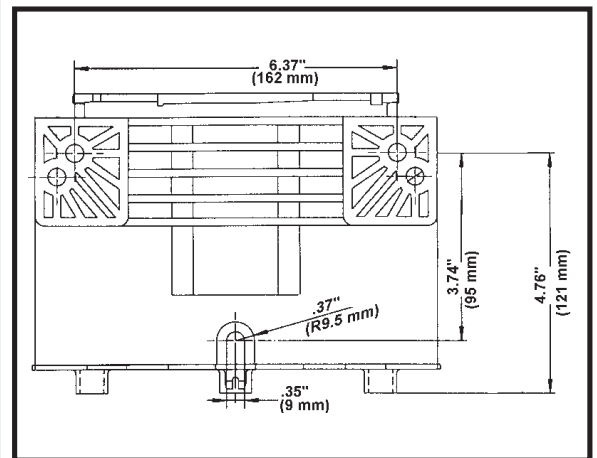


Fig. 1

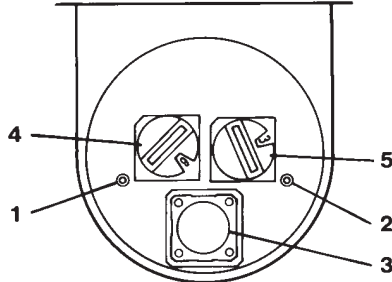
© Indicates Change

TIMER OPERATION

The Off timer begins accumulating time when the ignition switch closes. When the Off timer reaches the preset value, the pump will turn on. The pump remains activated for the period of time that is preset on the On timer.

When the ignition switch opens, the Off timer will retain its accumulated time for a period of five days. When the ignition switch closes during the five day period, the Off timer will resume timing from the accumulated time it reached prior to the ignition switch opening. If ignition switch is not closed before the end of five day period, timer will begin with an On period.

Remove Sealing Plug (Item 22) to access manual lube switch, timer adjustments or to view the system LED's.



1. The LED marked "battery" lights when power is applied to the PC board.
2. The LED marked "motor" lights when pumping lubricant.
3. Depressing pushbutton for 2 seconds will initiate a manual lube event.
4. Off time rotary switch. Can be adjusted to 15 values (see chart below).
5. On time rotary switch. Can be adjusted to 15 values (see chart below).

IMPORTANT: Do Not use the Zero position located on the Off time and On time switches.

| Off-Time Rotary Switch Setting | Interval Between Lube Cycles | On-Time Rotary Switch Setting | Pump will run for: |
|--------------------------------|------------------------------|-------------------------------|--------------------|
| 0 | Will not run | 0 | Will not run |
| 1 | 1 hour | 1 | 2 minutes |
| 2 | 2 hours | 2 | 4 minutes |
| 3 | 3 hours | 3 | 6 minutes |
| 4 | 4 hours | 4 | 8 minutes |
| 5 | 5 hours | 5 | 10 minutes |
| 6 | 6 hours | 6 | 12 minutes |
| 7 | 7 hours | 7 | 14 minutes |
| 8 | 8 hours | 8 | 16 minutes |
| 9 | 9 hours | 9 | 18 minutes |
| A | 10 hours | A | 20 minutes |
| B | 11 hours | B | 22 minutes |
| C | 12 hours | C | 24 minutes |
| D | 13 hours | D | 26 minutes |
| E | 14 hours | E | 28 minutes |
| F | 15 hours | F | 30 minutes |

SERVICE PARTS/KITS

| Part No. | Qty. | Description | Item No. |
|-----------|------|---|----------|
| 249568 | 1 | Grease fitting | 40 |
| 5050 | 1 | Grease fitting | 25 |
| 242125 | 1 | Grease cap | 39 |
| 249567 | 1 | Pressure relief assembly | 37 |
| 246420 | 1 | Printed circuit board | 26 |
| 246421 | 1 | Housing cover | 30 |
| 246422 | 1 | Closure plug | 17 |
| 246423 | 1 | Sealing plug | 22 |
| 246424 | 2 | O-ring | 7 |
| 246425 | 1 | Intermediate plate | 8 |
| 246426 | 1 | Pump housing | 16 |
| 246427 | 1 | Eccentric cam | 12 |
| 249565 | 1 | Adapter for relief assembly | 41 |
| 249569 | 1 | Seal | 47 |
| 246429 | 1 | Power Cord Kit contains: | |
| | 1 | Socket with cord | 18 |
| | 1 | Flat packing | 19 |
| 246431 | 1 | Optional Manual Lube Cord Set contains: | |
| | 1 | Flat packing | 19 |
| | 1 | Socket with cord | 33 |
| 246434 | 1 | Bearing & Seal Kit contains: | |
| | 1 | Washer | 4 |
| | 2 | Bearing ring | 5 |
| | 1 | Bearing | 6 |
| | 1 | Shim | 9 |
| | 2 | Snap ring | 10 |
| | 1 | Inner ring | 11 |
| 246435 | 1 | 12 VDC Motor Kit contains: | |
| | 3 | Screw | 13 |
| | 3 | Washer | 14 |
| | 3 | O-ring | 15 |
| | 1 | Woodruff key | 27 |
| | 1 | Radial seal | 28 |
| | 1 | 12 VDC motor | 29 |
| | 1 | Plug for motor | 38 |
| 246436 | 1 | 24 VDC Motor Kit contains: | |
| | 3 | Screw | 13 |
| | 3 | Washer | 14 |
| | 3 | O-ring | 15 |
| | 1 | Woodruff key | 27 |
| | 1 | Radial seal | 28 |
| | 1 | 24 VDC motor | 29 |
| | 1 | Plug for motor | 38 |
| 246437 | 1 | Housing Seal Kit contains: | |
| | 3 | O-ring | 15 |
| | 1 | Radial seal | 28 |
| 246440 | 1 | Power Plug Kit contains: | |
| | 1 | Flat packing | 19 |
| | 4 | Screws | 20 |
| | 1 | Plug | 21 |
| 246441 | 1 | Optional Manual Lube Plug Set contains: | |
| | 1 | Flat packing | 19 |
| | 4 | Screws | 20 |
| | 1 | Plug | 32 |
| 247671 | 1 | Lid | 42 |
| 247672 | 1 | Fixed paddle | 43 |
| 247674 | 1 | Reservoir | 1 |
| 247675 | 1 | Stirring paddle | 3 |
| 247676 | 1 | Hose | 2 |
| 247677 | 1 | O-ring | 44 |
| 247678 | 1 | Adapter | 45 |
| 247679 | 1 | Washer | 4 |
| 219141382 | 1 | O-ring | 46 |
| 226141055 | 1 | Nipple | 23 |
| 206137967 | 10 | Screw | 24 |
| 600268762 | 1 | Pump Element Assembly contains: | |
| | 1 | Check valve | 34 |
| | 1 | Pump element | 35 |
| | 1 | Gasket | 36 |

© Indicates Change

RETAIN THIS INFORMATION FOR FUTURE REFERENCE

When ordering replacement parts, list: Part Number, Description, Model Number and Series Letter. LINCOLN provides a Distributor Network that stocks equipment and replacement parts.