

# QUICKLUB® PROGRESSIVE DIVIDER VALVES

SSV & SSVM SERIES

## Series "A"

### SSV Series

#### SPECIFICATIONS:

Output Per Outlet: 0.012 cu. in. (0.2 cc) Per Piston Cycle

Max. Operating Pressure: 4350 psi (300 bar)

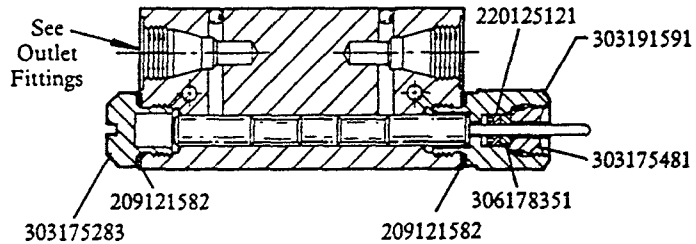
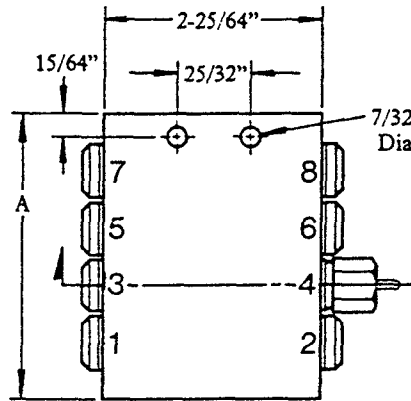
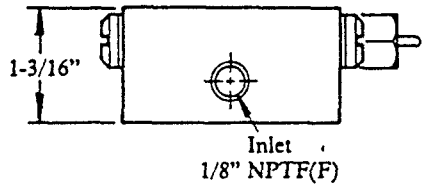
Min. Operating Pressure: 290 psi (20 bar)

Max. Press. Differential Between Two Outlets: 1450 psi (100 bar)

| Model No. | Number of Outlets | Monitoring    | Dimension A (Inches) |
|-----------|-------------------|---------------|----------------------|
| 619271211 | 6                 | —             | 2-3/8"               |
| 619271221 | 6                 | Indicator Pin | 2-3/8"               |
| 619263962 | 8                 | —             | 2-15/16"             |
| 619268462 | 8                 | Indicator Pin | 2-15/16"             |
| 619268441 | 10                | —             | 3-17/32"             |
| 619268452 | 10                | Indicator Pin | 3-17/32"             |
| 619263982 | 12                | —             | 4-1/8"               |
| 619266482 | 12                | Indicator Pin | 4-1/8"               |

#### NOTE:

All outlet fittings and closure plugs must be Quicklub® fittings to assure correct function of divider valves (order separately). See reverse side for selection.



### SSVM Series

#### SPECIFICATIONS:

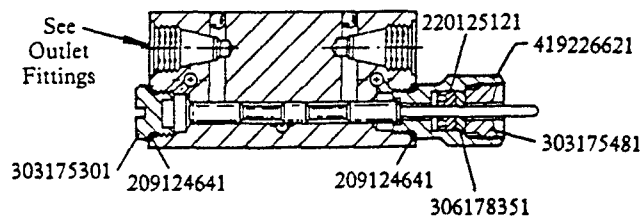
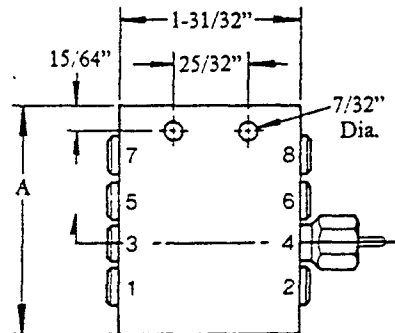
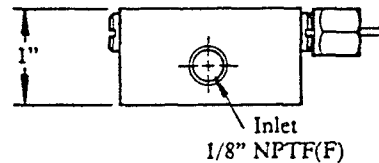
Output Per Outlet: 0.0037 cu. in. (0.07 cc) Per Piston Cycle

Max. Operating Pressure: 1450 psi (100 bar)

Min. Operating Pressure: 220 psi (15 bar)

Max. Press. Differential Between Two Outlets: 700 psi (50 bar)

| Model No. | Number of Outlets | Monitoring    | Dimension A (Inches) |
|-----------|-------------------|---------------|----------------------|
| 619267641 | 6                 | —             | 1-29/32"             |
| 619267653 | 6                 | Indicator Pin | 1-29/32"             |
| 619266501 | 8                 | —             | 2-11/32"             |
| 619266513 | 8                 | Indicator Pin | 2-11/32"             |
| 619268481 | 10                | —             | 2-13/16"             |
| 619268492 | 10                | Indicator Pin | 2-13/16"             |
| 619266531 | 12                | —             | 3-1/4"               |
| 619266543 | 12                | Indicator Pin | 3-1/4"               |



**LINCOLN**

A PENTAIR COMPANY

One Lincoln Way  
St. Louis, MO 63120-1578  
(314) 679-4200  
Customer Service, (314) 679-4300

SECTION - Q4  
PAGE - 1

## COMBINING OUTPUTS

Outputs from adjacent outlets may be combined by installing a closure plug in one or more outlets. Lubricant from a plugged outlet is redirected to the next adjacent outlet in descending numerical order.

**IMPORTANT:** Outlets 1 and 2 (bottom) must not be plugged as they have no crossport passage to the next adjacent outlet (top).

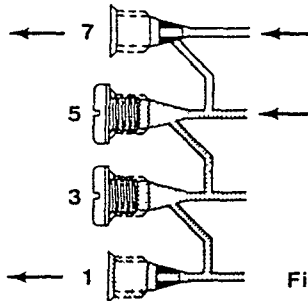
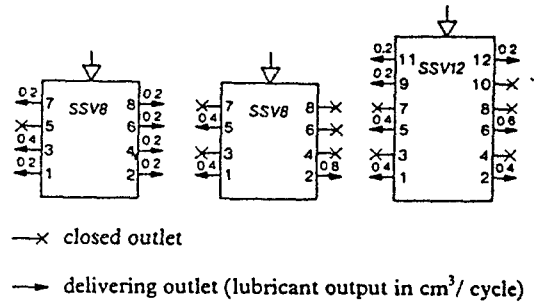


Figure 1

In Fig. 1, Outlets 1, 3 and 5 are combined and directed through Outlet 1. In this example, Outlet 1 will dispense three times as much lubricant as Outlet 7. The tube ferrule in Outlet 7 blocks the crossport passage so that lubricant flow is directed through Outlet 7.

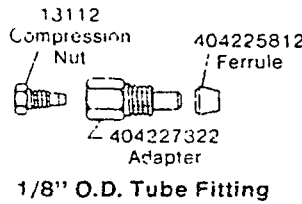
Examples:



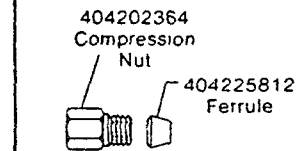
—X closed outlet

→ delivering outlet (lubricant output in cm<sup>3</sup>/cycle)

### OUTLET FITTINGS FOR SSV DIVIDER VALVES (Not Included, Must be ordered separately.)

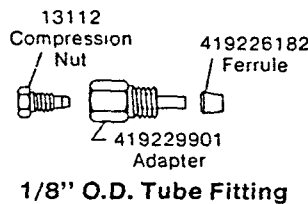


1/8" O.D. Tube Fitting

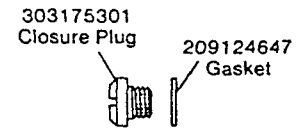


1/4" O.D. Tube Fitting

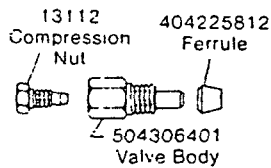
### OUTLET FITTINGS FOR SSVM DIVIDER VALVES (Not Included, Must be ordered separately.)



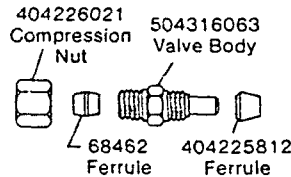
1/8" O.D. Tube Fitting



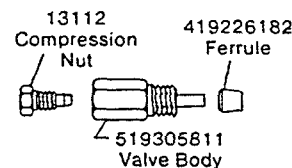
Closure Plug



1/8" O.D. Tubing Check Valve



1/4" O.D. Tubing Check Valve



1/8" O.D. Tubing Check Valve

### SERVICE PARTS

| PART      | DESCRIPTION             |
|-----------|-------------------------|
| 209124647 | Copper gasket           |
| 209121582 | Copper gasket           |
| 220125121 | U-cup packing           |
| 303175283 | Closure plug            |
| 303175301 | Closure plug            |
| 303175481 | Packing retaining screw |
| 303191591 | Packing housing         |
| 306178351 | Gasket                  |
| 419226621 | Packing housing         |

1/4" O.D. tubing must be used for supply lines from a primary to a secondary divider valve. 1/8" O.D. tubing can only be used for feed lines (from divider valve to bearing point). SSVM Divider Valves cannot be used as primary divider valves in a secondary system.

**NOTE:** When using an eight outlet pump, the pump is considered a primary divider valve.

## TROUBLESHOOTING

| PROBLEM   | SOLUTION  |
|---|---|
| 1) Divider valve cycles slowly or fails to cycle. | <p>Soap build-up in the internal ports of divider valve -<br/>Remove pistons and wash divider valve block in a bath of solvent.</p> <p><b>IMPORTANT:</b> Each piston <b>MUST</b> be returned to its respective bore during reassembly.</p> <p><b>NOTE:</b> If blockage is too severe and hard, replace the divider valve.</p> <p>Blockage in delivery line -<br/>Loosen fittings at divider valve outlets until lubricant under pressure emerges from outlet. This indicates the blocked delivery line. Trace line to determine cause of blockage and resolve problem. Retighten all outlets.</p> |

### RETAIN THIS INFORMATION FOR FUTURE REFERENCE

When ordering replacement parts, list: Part Number, Description, Model Number, and Series Letter.

LINCOLN provides a Distributor Network that stocks equipment and replacement parts.

A list of Authorized Service Departments will be furnished upon request.