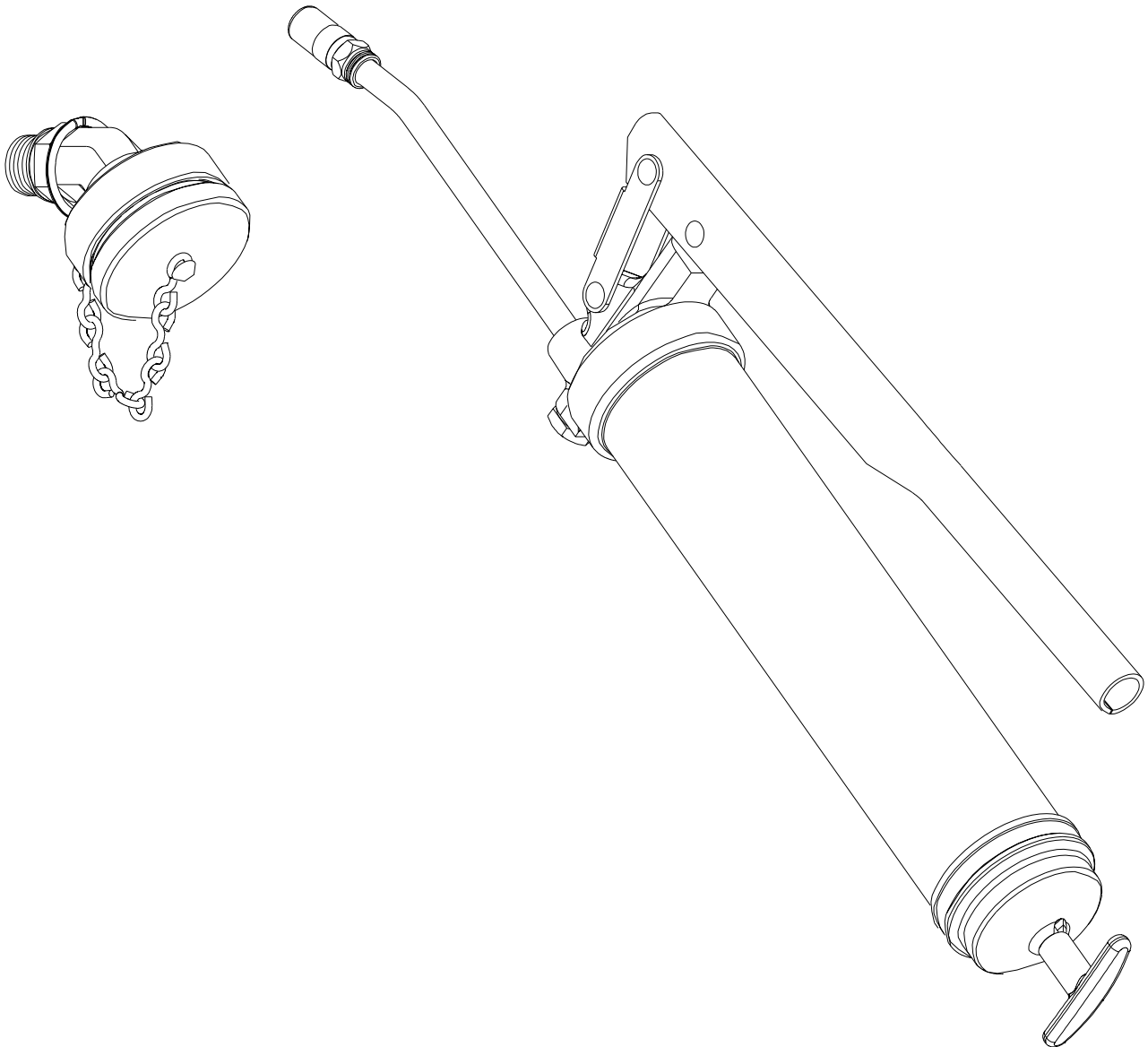

**Manual Fill Kit
Model 85428
Series "A"**



General Description

This unit is a manual fill kit for 203 pumps and QLS-301 pumps. The kit consists of a Fill Adapter and a Model 1142 Grease Lever Gun. The fill adapter is attached to the pump reservoir and the cartridge assembly from the Model 1142 Lever Gun is used to fill the reservoir from grease cartridges or from bulk fill. The Lever Gun can also be used in the normal manner to lubricate through grease fittings.

Appropriate Use

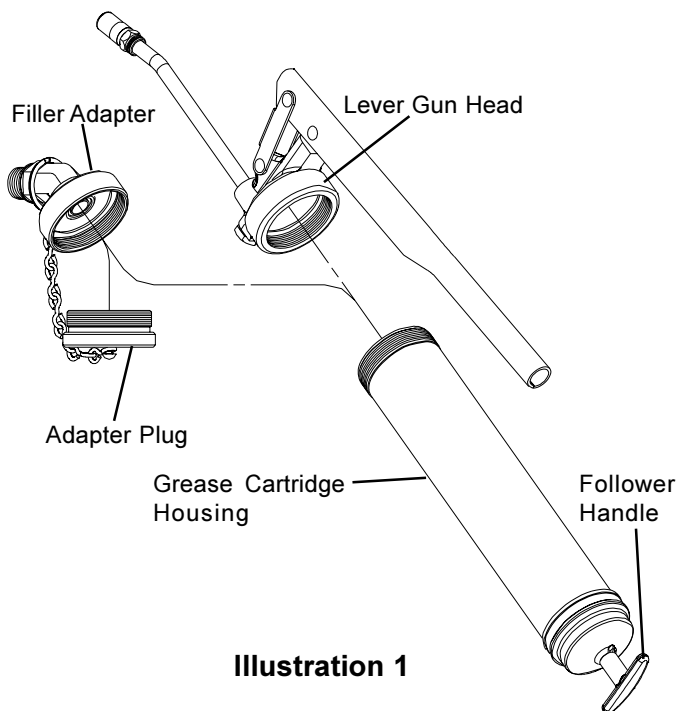
- This unit is exclusively designed to be used as a manual grease fill adapter for Model 203 and QLS-301 pumps.
- It should not be used in such a manner that it will be pressurized.
- Any other use not in accordance with the instructions will result in loss of claims for warranty and liability.

Product Specification

Reservoir Adapter Thread	M22 x 1.5
Cartridge Adapter Thread	2.290-16 UNS

Installing the Fill Adapter

1. Remove closure plug from pump reservoir fill port.
2. Screw fill adapter all the way into fill port, then back off adapter until it is facing in the desired direction.
3. Tighten nut on fill adapter elbow, while holding adapter in desired position.

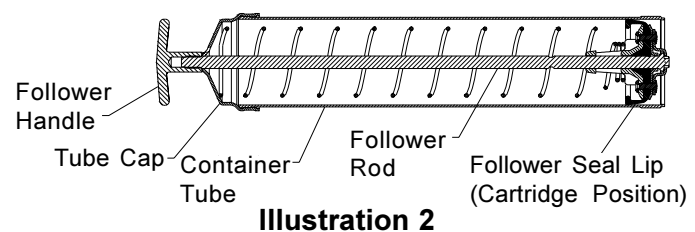


Filling Pump Reservoir (Illustration 1)

1. Pull back on follower handle until the follower rod is fully extended and latch the follower rod groove into the slot on the tube cap.
2. Unscrew Grease Cartridge Housing from Lever Gun Head.
3. Install grease cartridge or bulk fill (see appropriate section for detailed instructions).
4. Remove Adapter Plug (Item 4) from Fill Adapter (Item 2).
5. Screw Grease Cartridge Housing into Fill Adapter (Item 2).
6. Release follower rod from slot.
7. Engage the follower rod with the follower by lightly pulling and rotating the follower handle.
8. Push follower handle to dispense grease from Grease Cartridge Housing into pump reservoir.
9. Remove Grease Cartridge Housing from the Fill Adapter (Item 2).
10. Screw Adapter Plug (Item 4) into Fill Adapter (Item 2).
11. To eject empty cartridge, pull back on follower handle until the follower rod is fully extended and then carefully release follower handle.
12. Refill Grease Cartridge Housing.
13. Screw Grease Cartridge Housing into Lever Gun Head.
14. Release follower rod from slot. Purge air from Lever Gun. See air purging instructions.

Installing Grease Cartridge

1. Visually check follower seal lip direction before loading a new cartridge. The follower seal lip must be directed toward the follower handle for cartridge loading. See Illustration 2. To change direction of the follower seal, unscrew tube cap from container tube and pull on handle to remove follower seal from tube. Flip follower seal over and re-assemble.
2. Pull back on follower handle and latch the follower rod groove into the slot on the tube cap.
3. Remove the plastic cap from the grease cartridge and insert the cartridge into the container tube.
4. Remove the pull tab from the grease cartridge and screw Grease Cartridge Housing into Fill Adapter or Lever Gun Head.
5. Release follower from slot. Purge air if installed on Lever Gun. See air purging instructions.



Manual Bulk Filling

1. Visually check follower lip seal direction before filling. The follower lip seal must be directed away from the follower handle for bulk filling. To change direction of the follower seal, unscrew tube cap from container tube and pull on handle to remove follower seal from tube. Flip follower seal over and re-assemble.
2. Pack container tube follower end with grease to eliminate air pocket.
3. Dip packed end of the container tube about one inch into bulk container.
4. Slowly pull follower handle back while gradually pushing container tube deeper into grease.
5. When follower rod is fully extended pull sideways to latch it into slot in tube cap.
6. Wipe excess grease from outside of container tube.
7. Screw Grease Cartridge Housing into Fill Adapter or Lever Gun Head.
8. Release follower from slot. Purge air if installed on Lever Gun. See air purging instructions.

Air Purging

1. Unscrew the Grease Cartridge Housing 1-1/2 turns from the Lever Gun Head.
2. Engage the follower rod with the follower by lightly pulling up and rotating the follower handle.
3. Push down on the follower handle until lubricant oozes from the housing and head interface.
4. Tighten the Grease Cartridge Housing into the Lever Gun Head.
5. Dis-engage the follower rod from the follower by rotating the follower handle. Push the follower rod into the container.

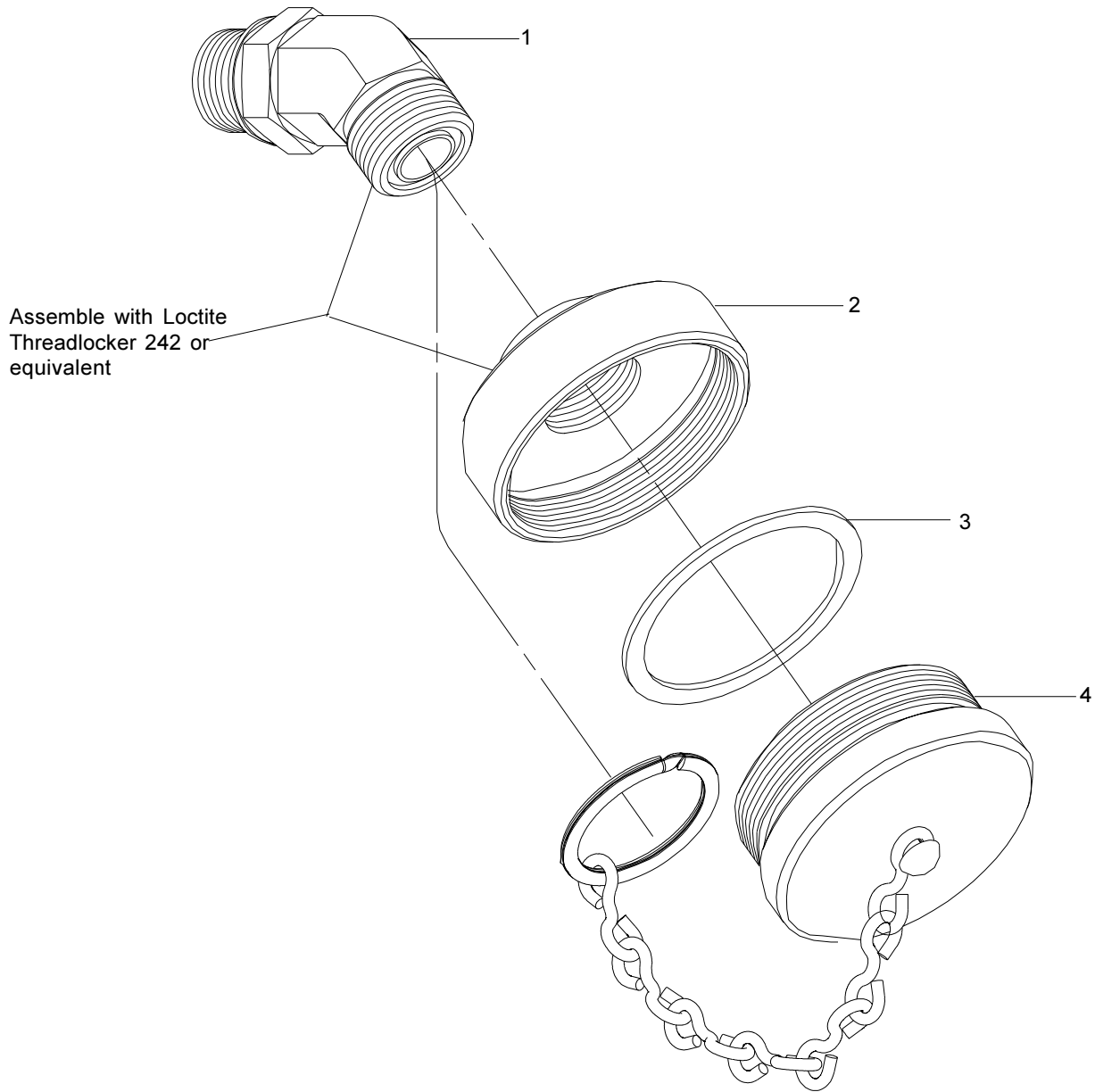


Illustration 3

Repair Parts List

Item No.	Quan.	Description	Repair Part No.
1	1	Elbow	270806
2	1	Cap	270807
3	1	Gasket	34793
4	1	Plug and Chain Assembly	270808